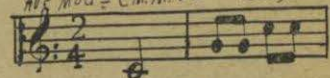




26 LEVANTARSE

All^o Mod^o (M.M. ♩ = 120)



27 PERSEGUIR AL ENEMIGO

All^o Mod^o (M.M. ♩ = 120)



28 BATALLA

All^o Mod^o (M.M. ♩ = 120)



All.^o Mod.^o (M. M. J. = 120)

29 COLUMNNA

Musical notation for '29 COLUMNNA' in 2/4 time, consisting of two staves. The first staff begins with a treble clef and a key signature of one flat. The second staff continues the melody with a repeat sign at the end.

All.^o (M. M. J. = 132)

30 PELOTONESS

Musical notation for '30 PELOTONESS' in 2/4 time, consisting of two staves. The first staff begins with a treble clef and a key signature of one flat. The second staff continues the melody with a repeat sign at the end.

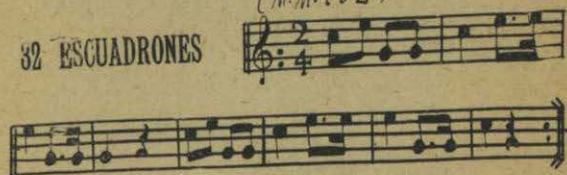
All.^o (M. M. J. = 132)

31 SECCIONES

Musical notation for '31 SECCIONES' in 2/4 time, consisting of three staves. The first staff begins with a treble clef and a key signature of one flat. The second and third staves continue the melody with a repeat sign at the end.

32 ESCUADRONES

(M.M. 132)



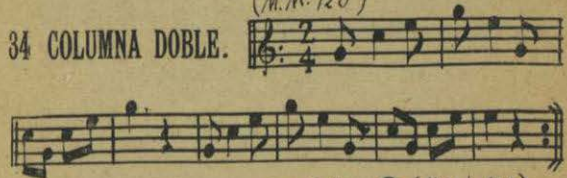
33 COLUMNA CERRADA

All.^o (M.M. 120)



34 COLUMNA DOBLE.

(M.M. 120)



35 LÍNEA DE COLUMNA

All.^o Mod^{to} (M.M. 120)



36 MASA A

(M. = 120)

Musical notation for 'MASA A' in 2/4 time, marked (M. = 120). The piece consists of two staves of music. The first staff begins with a treble clef and a 2/4 time signature. The melody is characterized by eighth-note patterns and slurs. The second staff continues the melody and concludes with a double bar line and repeat dots.

37 ESCALONES

All. Mod. (M. M. = 120)

Musical notation for 'ESCALONES' in 2/4 time, marked All. Mod. (M. M. = 120). The piece consists of two staves of music. The first staff begins with a treble clef and a 2/4 time signature. The melody features a series of eighth-note runs. The second staff continues the piece and ends with a double bar line and repeat dots.

38 RESERVA

Musical notation for 'RESERVA' in 3/4 time. The piece consists of two staves of music. The first staff begins with a treble clef and a 3/4 time signature. The melody is primarily composed of quarter notes. The second staff continues the melody and includes a first ending bracket labeled '1.' and a second ending bracket labeled '2.'. Both staves conclude with a double bar line and repeat dots.

39 AL HOMBRO SABLE

All. Mod. (M. M. = 126)

Musical notation for 'AL HOMBRO SABLE' in 2/4 time, marked All. Mod. (M. M. = 126). The piece consists of two staves of music. The first staff begins with a treble clef and a 2/4 time signature. The melody features eighth-note patterns. The second staff continues the piece and includes a first ending bracket labeled '1.' and a second ending bracket labeled '2.'. Both staves conclude with a double bar line and repeat dots.

40 ENVAINEN SABLE *All: Mod. $\frac{2}{3}$ (M.M. $\downarrow = 126$)*

41 PARTE *All: Mod. $\frac{2}{4}$ (M.M. $\downarrow = 120$)*

42 LISTA *All: (M.M. $\downarrow = 120$)*

43 NEGACIÓN *All: (M.M. $\downarrow = 120$)*

44 ENEMIGOS *All: (M.M. $\downarrow = 144$)*

45 INFANTERÍA *All: (M.M. $\downarrow = 144$)*

46 CABALLERÍA *All.^o (M. M. J. = 144)*

47 ARTILLERÍA *All.^o (M. M. J. = 144)*

48 LLAMADA PARA EJERCICIOS

49 LLAMADA DE TROMPETAS



50 LLAMADA DE MUSICOS



51 LLAMADA DE SARGENTOS



52 LLAMADA DE HONOR



53 LLAMADA DE OFICIALES



54 FORRAJE



55 LIMPIA

All.^o (M.M. ♩ = 126)

56 AGUA

All.^o (M.M. ♩ = 80)

67 BOTASILLA

All^o (M.M. ♩ = 144)

Musical score for '67 BOTASILLA' in 2/8 time. The score consists of seven staves of music. The first staff begins with a treble clef and a 2/8 time signature. The music is written in a single system. The score includes various rhythmic patterns, including eighth and sixteenth notes, and rests. There are several measures with fingerings indicated by numbers 1 through 5. The piece concludes with a double bar line and repeat dots.

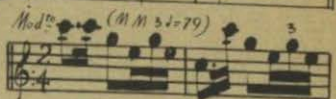
68 A CABALLO

Mod^o (M.M. ♩ = 88)

Musical score for '68 A CABALLO' in 2/4 time. The score consists of two staves of music. The first staff begins with a treble clef and a 2/4 time signature. The music is written in a single system. The score includes various rhythmic patterns, including eighth and sixteenth notes, and rests. There are several measures with fingerings indicated by numbers 1 through 5. The piece concludes with a double bar line and repeat dots.



59 PIE Á TIERRA



61 RANCHO

All: Mod^{to} (M.M. J=130)

Musical notation for '61 RANCHO' in 2/4 time. It consists of two staves. The first staff begins with a treble clef, a key signature of one flat (B-flat), and a 2/4 time signature. The melody is written in eighth and sixteenth notes. The second staff continues the melody and ends with a double bar line and repeat dots.

62 SILENCIO

And^{te} (M.M. J=65)

Musical notation for '62 SILENCIO' in common time (C). It consists of three staves. The first staff begins with a treble clef, a key signature of one flat (B-flat), and a common time signature. The melody is written in half and quarter notes, with some notes marked with a fermata. The second and third staves continue the melody with similar note values and fermatas.

63 HOSPITAL

All: Mod^o (M M 8-69)

A handwritten musical score for the piece '63 HOSPITAL'. The score is written on four staves of five-line music paper. The first staff begins with a treble clef and a common time signature (C). The notation includes various note values such as quarter, eighth, and sixteenth notes, as well as rests and beams. The piece concludes with a double bar line on the fourth staff. The paper shows signs of age, including some staining and wear at the bottom edge.

