

Nos. 1, 2, 3, 4, 5, 6, 7, 8, 9, 10, 11, 12, 13, 14, 15, 16, 17, 18, 19, 20, 21, 22

PAUL WISSAERT

PAUL WISSAERT, medalist (Belgian), was born in Brussels, 1885. From 1901 to 1905 studied at the Académie des Beaux-Arts at Brussels, under the direction of Messrs. Charles Vanderstappen and Julien Dillens, sculptors. From 1906 to 1907 he followed the courses at the École des Beaux-Arts at Paris, under the direction of J. C. Chaplain, member of the Institute. In 1908 he traveled in Italy and Sicily for the purpose of study, and made especially a long stay in Florence. Exhibited for the first time in Brussels, at the Musée Moderne, in June, 1909. Obtained first prizes in Brussels at the Académie des Beaux-Arts; also prizes in Paris at the École des Beaux-Arts; first prize at the contest of the Société des Amis de la Médaille in 1908.

WORKS: *Au Ruisseau*; *Vingt-cinquième Anniversaire de Mariage*; *L'Enseignement*, a plaquette struck for the Société des Amis de la Médaille.

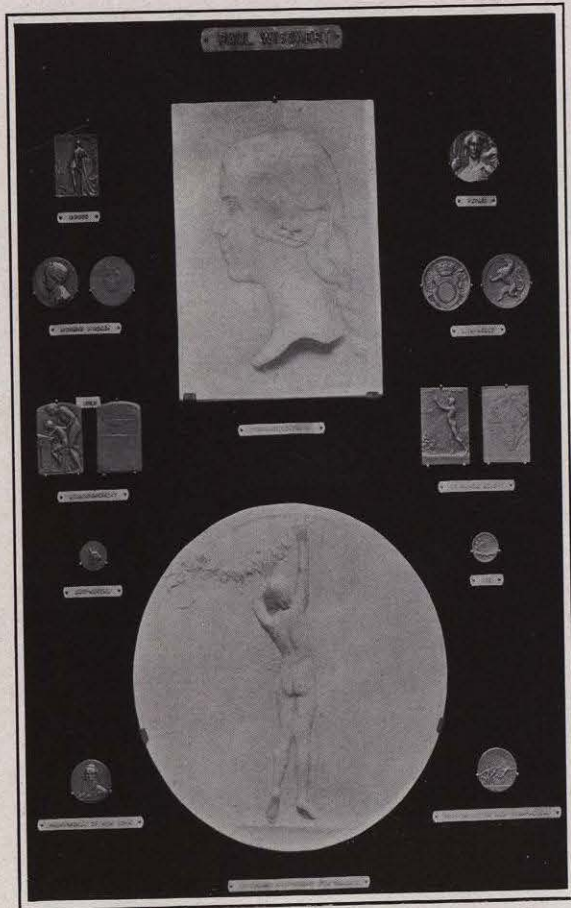
Criticisms of his works are to be found in the *Revue Durandal*, Brussels, for October, 1908, and October, 1909; also in the newspaper journals of June, July, and August, 1909. Address, 216 avenue Albert, Brussels.

- 1 Am Bach, 1909. Plaque in plaster, 20 x 20 cm. (struck plaquette, bronze, 50 x 50 mm.).
- 2 Concours Institué par le Professeur Morse de l'Université de New York, 1908. Obverse and reverse. Struck medal, bronze, 39 mm. (four struck in gold, and four artist's proofs).¹
- 3 "Duc," 1902. Obverse and reverse. Struck medal (dies cut by hand), bronze, 27 mm.
- 4 Juin, 1908. Struck plaquette (uniface), bronze, 58 x 45 mm.
- 5 La Jeunesse Bruxelloise au Prince Albert, 1909. Obverse and reverse. Struck plaquette, bronze, 71 x 49 mm.
- 6 L'Enseignement (medal of the Société Hollandaise-Belge des Amis de la Médaille d'Art), 1908. Obverse and reverse. Struck plaquette, bronze, 66 x 47 mm.
- 7 Lion Belge, 1903. Obverse and reverse. Struck medal (dies cut by hand), bronze, 50 mm.
- 8 Patria, 1908. Struck medal, bronze, 65 mm.

¹ Nos. 2, 5, 8, 9, and 12 are inedited and have not hitherto been shown in an exhibition.

(Since this note was written by the artist, some of these medals have been issued. See *Revue Belge*, 1911, Part II.)

- 9 Pêcheuse (Knocke), 1909. Plaque in plaster, 17 x 22 cm. (struck plaquette, bronze, 50 x 65 mm.).
- 10 Richard Wagner, 1902. Obverse and reverse. Struck medal (dies cut by hand), bronze, 45 mm.
- 11 Signorina Bertha P., 1908. Plaque in plaster, 27 x 20 cm. (struck piece, brooch, 30 mm.).
- 12 Vingt-cinquième Anniversaire de Mariage de M. et Mme. Fr. Wis-saert, 1909. Reverse. Medallion in plaster, 30 cm. (struck medal, bronze, 66 mm.).



Nos. 1, 2, 3, 4, 5, 6, 7, 8, 9, 10, 11, 12

ENID YANDELL

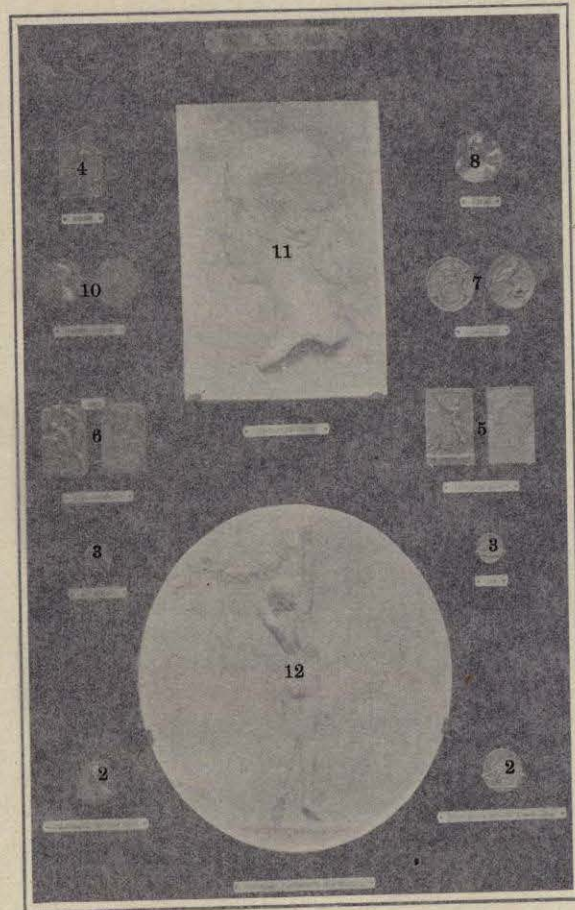
ENID YANDELL, sculptor (American), was born in Louisville, Kentucky, 1870; graduated Cincinnati Art School. Pupil of Philip Martiny, in New York, MacMonnies and Rodin in Paris. She won the designer's medal, at the Chicago Exposition, 1893. Has exhibited in Paris Salon regularly since 1895; silver medal, Nashville Exposition, 1897; honorable mention, Buffalo Exposition, 1901; bronze medal, St. Louis Exposition, 1904; decorated Of-

icier d'Académie, by the French Government, in 1906. Organizer, the Branstock Summer School of Art, Edgartown, Island of Martha's Vineyard, Massachusetts, 1907. Sculptor of the Woman's Building, Chicago Exposition, 1893; Carrie Brown Memorial Fountain, Providence, 1900; bust of Dr. W. T. Bull, College of Physicians and Surgeons, New York, 1909; medallion for Oliver Harriman, 1900; Emma Willard memorial, Albany, New York; Chancellor Garland, Vanderbilt University, Nashville; Hogan Fountain, Louisville, Kentucky, 1905; Thomas monument, Nashville, 1907. Member National Sculpture Society, Municipal Art Society, National Arts and Crafts Society, National Scenic and Historic Preservation Society, National Arts Club. Address, (summer) Edgartown, Massachusetts; (winter) 119 East Nineteenth Street, New York City.

- 1 Mrs. Breckenridge and Son, 1902. Bas-relief in plaster, 0.915 x 1.22 m. (bronze and marble).



- 9 Pêcheuse (Knocke), 1909. Plaque in plaster, 17 x 22 cm. (struck plaquette, bronze, 50 x 65 mm.).
- 10 Richard Wagner, 1902. Obverse and reverse. Struck medal (dies cut by hand), bronze, 45 mm.
- 11 Signorina Bertha P., 1908. Plaque in plaster, 27 x 20 cm. (struck piece, brooch, 30 mm.).
- 12 Vingt-cinquième Anniversaire de Mariage de M. et Mme. Fr. Wis-saert, 1909. Reverse. Medallion in plaster, 30 cm. (struck medal, bronze, 66 mm.).



Nos. 1, 2, 3, 4, 5, 6, 7, 8, 9, 10, 11, 12

ENID YANDELL

ENID YANDELL, sculptor (American), was born in Louisville, Kentucky, 1870; graduated Cincinnati Art School. Pupil of Philip Martiny, in New York, MacMonnies and Rodin in Paris. She won the designer's medal, at the Chicago Exposition, 1893. Has exhibited in Paris Salon regularly since 1895; silver medal, Nashville Exposition, 1897; honorable mention, Buffalo Exposition, 1901; bronze medal, St. Louis Exposition, 1904; decorated Of-

ficier d'Académie, by the French Government, in 1906. Organizer, the Branstock Summer School of Art, Edgartown, Island of Martha's Vineyard, Massachusetts, 1907. Sculptor of the Woman's Building, Chicago Exposition, 1893; Carrie Brown Memorial Fountain, Providence, 1900; bust of Dr. W. T. Bull, College of Physicians and Surgeons, New York, 1909; Sun dial for Oliver Harriman, 1900; Emma Willard memorial, Albany, New York; Chancellor Garland, Vanderbilt University, Nashville; Hogan Fountain, Louisville, Kentucky, 1905; Thomas monument, Nashville, 1907. Member National Sculpture Society, Municipal Art Society, National Arts and Crafts Society, National Scenic and Historic Preservation Society, National Arts Club. Address, (summer) Edgartown, Massachusetts; (winter) 119 East Nineteenth Street, New York City.

- 1 Mrs. Breckenridge and Son, 1902. Bas-relief in plaster, 0.915 x 1.22 m. (bronze and marble).



OVIDE YENCESSE

OVIDE YENCESSE, medalist, sculptor (French), was born at Dijon, 1869. He belongs to a Burgundian family of Flemish origin. He commenced his artistic studies in his native town and completed them at the École des Beaux-Arts of Paris, where he was sent as exhibitor from the department of Côte-d'Or. He was a pupil of Ponscarne, Levillain, and Thomas. He received a gold medal at the Universal Exposition of 1900, and was made a chevalier of the Legion of Honor the same year. He is a member of the Société des Artistes Français. Among the medals of this artist included in the national museums may be mentioned *Le Beurre*, *Le Ré-mouleur*, *Pierrette la Pauvre*, *Virginie la Sage*, *Annette la Folle*. He has exhibited in Dresden, Venice, Prague, Munich, Basel, Düsseldorf, St. Louis, Hanoi, Liège, Milan, Bucharest, where he has obtained several awards; gold medals at Dresden, grand prize at Bucharest, grand prize at Milan. His works are largely represented at the Musée du Luxembourg.

WORKS: *Van Dyck*; *Baiser de la Mère*, which has been reproduced by goldsmiths and jewelers, 1901; *Les Deux Âges*, *Manette et Minette*, for the Société des Amis de la Médaille; the senators *Magnin*, *Edme. Piot*; *Docteur Claude Chauveau*; *Hubert Yencesse*; *La Fumée*, cigarette-case; *La Flamme*, match-box, 1902; *Le Semeur*; *Ponscarne*, plaquette to the memory of the master engraver; *M. et Mme. Curie*, and a study *Pierre Curie*, which constitutes the only portrait after nature of the illustrious savant, 1903; *Le Baiser de l'Enfant*; *Charles Gauthiot*; *Berlioz et Wagner*, 1904; *Caresse d'Enfant*, medal for the Société des Amis de la Médaille; *Diane*, plaquette for the Minister of Agriculture, for the repression of poaching, 1905; *Le Peintre James Lignier*; *François le Ré-mouleur*; *Henri Chabeuf*, *Pierre Taitot*, et *Jeanne Millanvoy*, portraits; *Enfant aux Roses*; *Fuchsias*, 1906; *Le Baiser de Paix*, medal offered to the German miners by members of the International Conciliation Society; *Le Docteur Veau*, hospital surgeon; *La Gaîté*, medal for the Société de la Côte-d'Or; *La Grappe*, 1907. M. Yencesse is also the author of a medal ordered by the State for the donors of national museums, and of the commemorative plaquette of the International Exhibition of Milan. *Address*, 91 rue de Sèvres, Paris VI.

- 1 Bacchante, 1906. Cast medal, bronze, 140 mm. (struck, 35 mm.).
- 2 Baiser de la Mère, 1899. Cast piece, bronze (heart-shaped), 80 mm.

- 3 Baiser d'Enfant, 1903. Cast plaquette (single), bronze, 82 x 115 mm.
- 4 Caresse d'Enfant, 1904. Struck medal, bronze silvered, 46 mm. (cast, 114 mm., very rare).
- 5 Conciliation Internationale (d'après Eugène Carrière), 1907. Struck medal, bronze, 46 mm.
- 6 Diane, frappée par la Direction des Eaux et Forêts, 1905. Struck plaquette, silver, 50 x 40 mm. (artist's proof).
- 7 Enfant aux Roses, 1906. Struck plaquette, bronze, 55 x 33 mm.
- 8 Exposition Internationale, Milan, 1906. Obverse and reverse. Struck plaquette, bronze, 52 x 70 mm.
- 9 F. J. Hubert Ponscarne, 1901. Cast plaque (single), bronze, 22.5 x 12 mm.
- 10 François le Ré-mouleur, 1905. Cast plaque (single), bronze, 25 x 17 cm. (struck, 71 x 50 mm.).
- 11 Gustave Servois, 1908. Obverse and reverse. Cast medal (double), bronze, 140 mm.
- 12 *The same*. Struck medal, bronze, 60 mm.
- 13 Hubert Yencesse, 1902. Cast medal, bronze, 80 mm.
- 14 Le Beurre, 1900. Cast plaque (single), bronze, 22 x 9 cm.
- 15 L'Étude, 1909. Cast plaquette (single), bronze, 93 x 103 mm.
- 16 Le Semeur, 1901. Cast medal (single), bronze, 110 mm.
- 17 Les Deux Âges, "Manette et Minette" (medal of the Société des Amis de la Médaille Française, 1901). Struck medal, bronze silvered, 60 mm. (clichés).
- 18 Paul d'Estournelles de Constant, 1907. Cast medal (single), bronze, 110 mm.
- 19 Pierre Curie, 1903. Cast plaquette (single), bronze, 130 x 100 mm.
- 20 Pierrette la Pauvre, 1899. Cast plaque (single), bronze, 20 x 11 cm.
- 21 Portrait de Deux Enfants, 1903. Cast plaquette (single), bronze, 80 x 82 mm.
- 22 Rafale, 1909. Cast medal (single), bronze, 140 mm. (edition very limited).
- 23 Sénateur E. Piot, 1902. Struck medal, bronze, 50 mm.
- 24 Sénateur Joseph Magnin, 1903. Struck medal, bronze, 50 mm.
- 25 Société des Amateurs Indépendants, 1906. Reverse. Cast plaquette (double), bronze, 70 x 85 mm.
- 26 Virginie la Sage, 1899. Cast plaque (single), bronze, 20 x 11 cm.