

Légion d'Honneur, 1883. Medal, galvano silvered (struck medal, 68 mm.).

- 5 Jonkheer Otto Reuchlin, 1898. Obverse and reverse. Medal, galvano silvered (cast bronze, 100 mm.).
- 6 Société d'Encouragement de l'Escrime, 1883. Medallion, galvano silvered (cast (single) bronze, 79 mm.; struck, 50 mm.).
- 7 Société Française de Sauvetage, 1885. Medal, galvano silvered (cast (single) bronze, 67 mm.; struck medal, 41 mm.).
- 8 Syndicat Général de la Bourse de Commerce de Paris, 1892. Medal (jeton, octagonal), galvano.

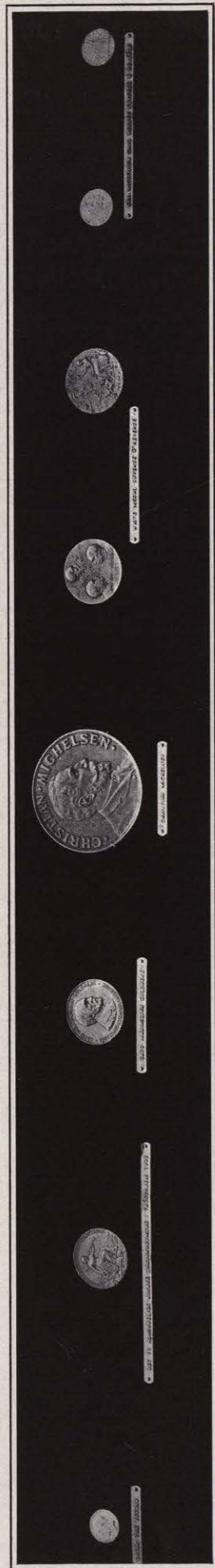
IVAR THRONDSSEN

IVAR THRONDSSEN, medalist (Norwegian), was born in Naes, Romerike, Norway, 1853. He is a pupil of J. Tostrup and J. Middelthun, Christiania; A. Michelsen, Copenhagen; and of Paulin Tasset, Paris. He was made engraver of the Royal Mint of Norway, situated at Kongsberg, in 1879. He has won the following prizes: at the Christiania Exhibition, 1883, a silver medal; at the Paris Exposition, 1889, a bronze medal; at the Skien Exhibition, 1891, a gold medal; in 1896 the royal medal of merit; at the Stockholm Exhibition, 1897, a silver medal; at the Paris Exposition, 1900, a silver medal and a bronze medal; at the Drammen Exhibition, 1901, a gold medal; in 1906 a coronation medal on the occasion of the crowning of King Haakon VII. Address, Kongsberg, Norway.

- 1 75^e Anniversaire du Jour de Naissance de Oscar II. Struck medal, silver (cliché).
- 2 Björnstjerne Björnson et la Chanson Nationale. Struck plaquette, bronze, 63 x 43 mm. (cliché).
- 3 Christian Michelsen, portrait. Cast medal, bronze, 118 mm.
- 4 Christian Michelsen et Carl Berner, 1905. Obverse and reverse. Struck medal, silver, 35 mm. (clichés).
- 5 Couronnement de Haakon VII et Maude (officielle), 1906. Obverse and reverse. Struck medal, bronze, 29 mm. (clichés).
- 6 Couronnement de Haakon VII et Maude (souvenir), 1906. Obverse and reverse. Struck medal, bronze, 40 mm. (clichés).
- 7 Det 11^{de} Almindelige Norske Landbrugsmøde i Trondhjem (Expo-

sition Agriculaire à Drontheim), 1902. Obverse and reverse. Struck medal, bronze, 55 mm. (clichés).

- 8 Det 12^{de} Almindelige Norske Landbrugsmøde, Kristiania (Exposition Agriculaire à Christiania), 1907. Obverse and two different reverses, "Agriculture" and "Horticulture." Struck medal, bronze (clichés).
- 9 Haakon VII, médaille de récompense de l'Université de Christiania. Obverse and reverse. Struck medal, bronze, 40 mm. (clichés).
- 10 Haakon VII, médaille de mérite. Struck medal, silver, 28 mm.
- 11 Le Roi Haakon VII, la Reine Maude et le Prince Royal Olav. Cast medal, bronze, 150 mm.
- 12 Rop leve Norge (Vive la Norvège). Struck plaquette, bronze, 63 x 43 mm. (cliché).
- 13 Selskabet for Christiania Bys Vel (Société pour l'Avancement du Bien-être de Christiania), prize medal. Struck medal, bronze, 35 mm. (cliché).
- 14 Sport, Idroet giver Sundhed ("L'Exercice Enfante la Santé"). Struck medal, bronze, 31 mm. (cliché).
- 15 Til enig Vagt om Norge ("À la Protection Mutuelle de la Norvège"), May 17, 1905. Cast medal, bronze, 118 mm.
- 16 Université de Christiania, For videnskabeligt Arbeide (Pour Travail Scientifique), Cato Maximilian Guldberg. Obverse and reverse. Struck medal, bronze, 60 mm. (clichés).
- 17 Valkyrie. Struck plaquette, bronze, 41 x 34 mm. (cliché).
- 18 Visite du Roi Haakon VII à Kongsberg. Struck medal, bronze, 31 mm.
- 19 White et Fils, Fabrique des Eaux Minérales, Londres, 1903. Obverse and reverse. Struck medal, bronze, 60 mm. (clichés).



Nos. 1, 3, 4, 7, 16 (Obv.), 19



Nos. 6, 8, 10, 11, 13, 16 (Rev.), 17



Nos. 2, 5, 9, 12, 14, 15, 18

TIFFANY & CO.

GOLDSMITHS, SILVERSMITHS, GEM MERCHANTS, NEW YORK

The house of Tiffany & Co. was founded in 1837 by the late Mr. Charles L. Tiffany, who was its head until 1902.

- 1 Al Héroe de la Paz, Estado de Chihuahua, 1909. Struck medal, silver, 72 mm. (also exists in gold and bronze).
- 2 *The same.* Model in plaster.
- 3 Commander Robert Edwin Peary, awarded by the National Geographic Society for the Discovery of the North Pole, 1910. Obverse and reverse. Etched and engraved medal, silver, 100 mm. (also exists in gold and bronze).
- 4 Edgar Allan Poe, Centenary, January 19, 1909. Obverse and reverse. Struck medal, bronze, 38 mm.
- 5 *The same.* Model in plaster.
- 6 Gardiner G. Hubbard, awarded by the National Geographical Society to Sir Ernest H. Shackleton for Explorations in the Antarctic, March 30, 1910. Etched and engraved medal, gold, 75 mm.
- 7 Jamestown Tercentennial Exposition, 1907. Struck medal, silver, 62 mm.
- 8 *The same.* Model in plaster.
- 9 Peter Stuyvesant, 1908. Struck medal, gold, 62 mm.
- 10 *The same.* Model in plaster.



9 (Obv.)



6



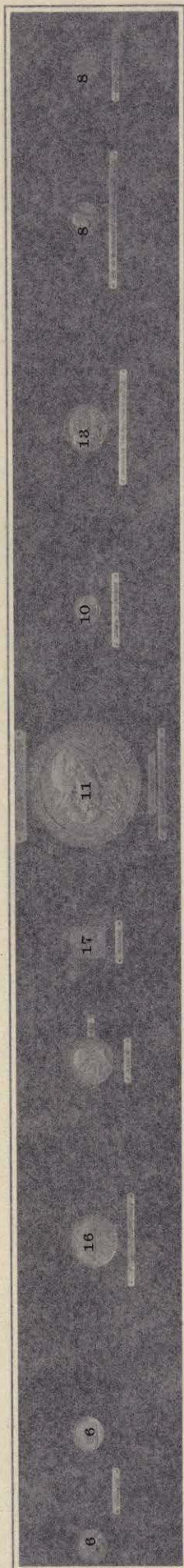
9 (Rev.)

6

1



Nos. 1, 3, 4, 7, 10 (Obv.), 19



Nos. 6, 8, 10, 11, 13, 16 (Rev.), 17



Nos. 2, 5, 9, 12, 14, 15, 18

TIFFANY & CO.

GOLDSMITHS, SILVERSMITHS, GEM MERCHANTS, NEW YORK

The house of Tiffany & Co. was founded in 1837 by the late Mr. Charles L. Tiffany, who was its head until 1902.

- 1 Al Héroe de la Paz, Estado de Chihuahua, 1909. Struck medal, silver, 72 mm. (also exists in gold and bronze).
- 2 *The same.* Model in plaster.
- 3 Commander Robert Edwin Peary, awarded by the National Geographic Society for the Discovery of the North Pole, 1910. Obverse and reverse. Etched and engraved medal, silver, 100 mm. (also exists in gold and bronze).
- 4 Edgar Allan Poe, Centenary, January 19, 1909. Obverse and reverse. Struck medal, bronze, 38 mm.
- 5 *The same.* Model in plaster.
- 6 Gardiner G. Hubbard, awarded by the National Geographical Society to Sir Ernest H. Shackleton for Explorations in the Antarctic, March 30, 1910. Etched and engraved medal, gold, 75 mm.
- 7 Jamestown Tercentennial Exposition, 1907. Struck medal, silver, 62 mm.
- 8 *The same.* Model in plaster.
- 9 Peter Stuyvesant, 1908. Struck medal, gold, 62 mm.
- 10 *The same.* Model in plaster.



9 (Obv.)



1



9 (Rev.)

UNITED STATES MINT, PHILADELPHIA

- 1 Abraham Lincoln, 1909. Struck medal, bronze, 64 mm.
- 2 *The same.* Galvano model for the above.
- 3 American Red Cross, 1909. Struck medal, bronze, 38 mm.
- 4 *The same.* Phosphor-bronze model for the above.
- 5 Cardenas, May 11, 1898. Obverse and reverse. Struck medal, bronze, 72 mm.
- 6 *The same.* Phosphor-bronze model for the above.
- 7 Departure of the United States Atlantic Fleet on its Cruise around the World, 1907. Obverse and reverse. Struck plaque, bronze, 62 x 80 mm.
- 8 *The same.* Phosphor-bronze model for the above.
- 9 George B. Cortelyou, Secretary of the Treasury, 1909. Struck plaque, bronze, 57 x 40 mm.
- 10 *The same.* Phosphor-bronze model for the above.
- 11 Inauguration of Theodore Roosevelt, Second Term, 1905. Reverse. Struck medal, bronze, 71 mm.
- 12 *The same.* Phosphor-bronze model for the above.
- 13 Inauguration of William H. Taft, 1909. Obverse and reverse. Struck medal, bronze, 71 mm.
- 14 *The same.* Galvano model for the above.
- 15 John Griffin Carlisle, Secretary of the Treasury, 1893. Obverse and reverse. Struck medal, bronze, 71 mm.
- 16 *The same.* Phosphor-bronze model for the above.
- 17 Leslie M. Shaw, Secretary of the Treasury, 1902-1907. Struck plaque, bronze, 71 x 51 mm.
- 18 *The same.* Galvano model for the above.
- 19 Wilbur and Orville Wright, Aëronauts, 1909. Obverse and reverse. Struck plaque, bronze, 57 x 83 mm.
- 20 *The same.* Phosphor-bronze model for the above.
- 21 William McKinley, Pan-American Exposition, 1901. Reverse. Struck medal, bronze, 71 mm.
- 22 *The same.* Phosphor-bronze model for the above.

¹ Nos. 1-24 are the work of Messrs. Barber and Morgan, Engravers at the Mint at Philadelphia. Nos. 25-27 were modeled and engraved by Augustus Saint-Gaudens.

- 23 World's Columbian Exposition, Four-Hundredth Anniversary of the Landing of Columbus (1492-1892), 1893. Reverse. Struck medal, bronze, 77 mm.
- 24 *The same.* Phosphor-bronze model for the above.

AUGUSTUS SAINT-GAUDENS†

AUGUSTUS SAINT-GAUDENS, sculptor, medalist (American), was born in Dublin, 1848. His father, Bernard Paul Ernest, was a native of France, coming from the vicinity of the town of Saint-Gaudens, among the spurs of the Pyrenees. His parents brought him to this country while he was still an infant. At the age of thirteen he was apprenticed to a cameo-cutter. Subsequently he studied at the National Academy of Design in New York. In 1867 he went to Paris, entered the École des Beaux-Arts, and was pupil of Jouffroy for three years. In 1871 he went to Rome, where he executed his first statue in marble, *Hiawatha*. He died in August, 1907.

WORKS: *The Puritan*; *The Adoration of the Cross by the Angels*; bas-relief for St. Thomas's Church, New York; the statue of Admiral Farragut for New York City, which was exhibited at the Salon of Paris in 1880, along with six medallions, and which won him an honorable mention; the statues of Robert Randall and Abraham Lincoln for the city of Chicago; the equestrian statue of General Sherman at the entrance to Central Park, New York; *Diana*, Madison Square Tower, New York; statue of Samuel Chapin for Springfield, Massachusetts; the busts of W. M. Evarts; of the Hellenist, Theodore Dwight Woolsey; and of General Sherman; the *Shaw Memorial*, Boston, Massachusetts.

- 25 10-Dollar Gold Piece, 1907. Obverse and reverse. Model in plaster.
- 26 20-Dollar Gold Piece, 1907. Obverse and reverse. Model in plaster.¹
- 27 World's Columbian Exposition, Four-Hundredth Anniversary of the Landing of Columbus (1492-1892), 1893. Obverse and reverse.² Galvano model for medal.

¹ The first 20-dollar gold pieces are 4 mm. thick; the succeeding pieces 2 mm.; the latest pieces beginning with 1908 are only 2 mm. thick. The pieces of greatest thickness and very high relief were struck on a medal press, and each piece was struck ten times and annealed between each impression.

² The reverse design for this medal was rejected, and the reverse by C. E. Barber, No. 23, adopted.