

O. SPANIEL

O. SPANIEL, sculptor (Austrian), was born in Jaromer, Bohemia. Studied at the School for Decorative Art at Gablonz, in North Bohemia; the School of Engraving and Medals (Professor J. Tautenhayn) at the Academy of Fine Arts in Vienna; School of Sculpture at the Academy of Fine Arts in Prague. First exhibition (after leaving the Academy) in 1902. Prizes: Gundel prize, prize for the best medallion engraved, prize of the official schools at the Academy of Fine Arts in Vienna; two prizes for sculpture at the Academy of Fine Arts in Prague; prize L. Schmidt from the Academy for the Sciences and Fine Arts of Bohemia (1907).

WORKS: *M. Jules Janssen*, astronomer, director of the Observatoire de Meudon, plaque; medallion of the governor of Bohemia; *M. E. Denis*, professor at the Sorbonne, plaque; *M. K. Zenger*, astronomer, plaque. Address, 1 rue Leclerc, Paris XIV.

- 1 Exposition de Bruo-Moravie, 1908. Obverse and reverse. Struck medal, 55 mm.
- 2 Couturière, 1905. Cast plaque (single), bronze, 25 x 17.5 cm.
- 3 Jeune Femme au Bain, 1906. Cast plaque (single), bronze, 20.5 x 16 cm.
- 4 Jules Janssen, Astronome, Membre de l'Institut, 1906. Struck plaque, bronze, 41 x 60 mm.
- 5 *The same*. Cast plaque (single), model for the above, bronze, 19 x 25 cm.
- 6 Mme. Janssen, 1906. Cast plaque (single), bronze, 20.5 x 23 cm.
- 7 M. Milan Stefanik, 1906. Struck plaque, bronze, 48 x 51 mm.
- 8 Prince Lobkowitz, 1904. Obverse and reverse. Struck medal, bronze, 60 mm.

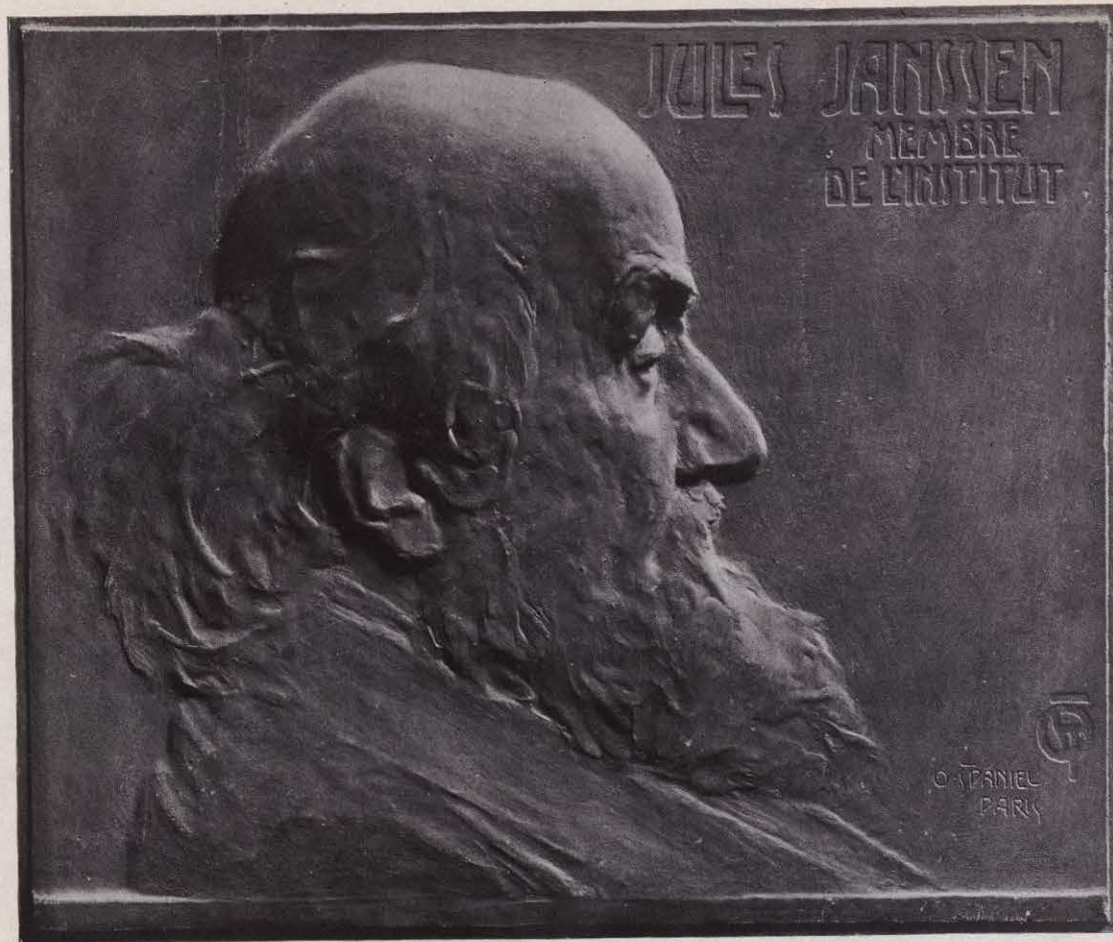


8

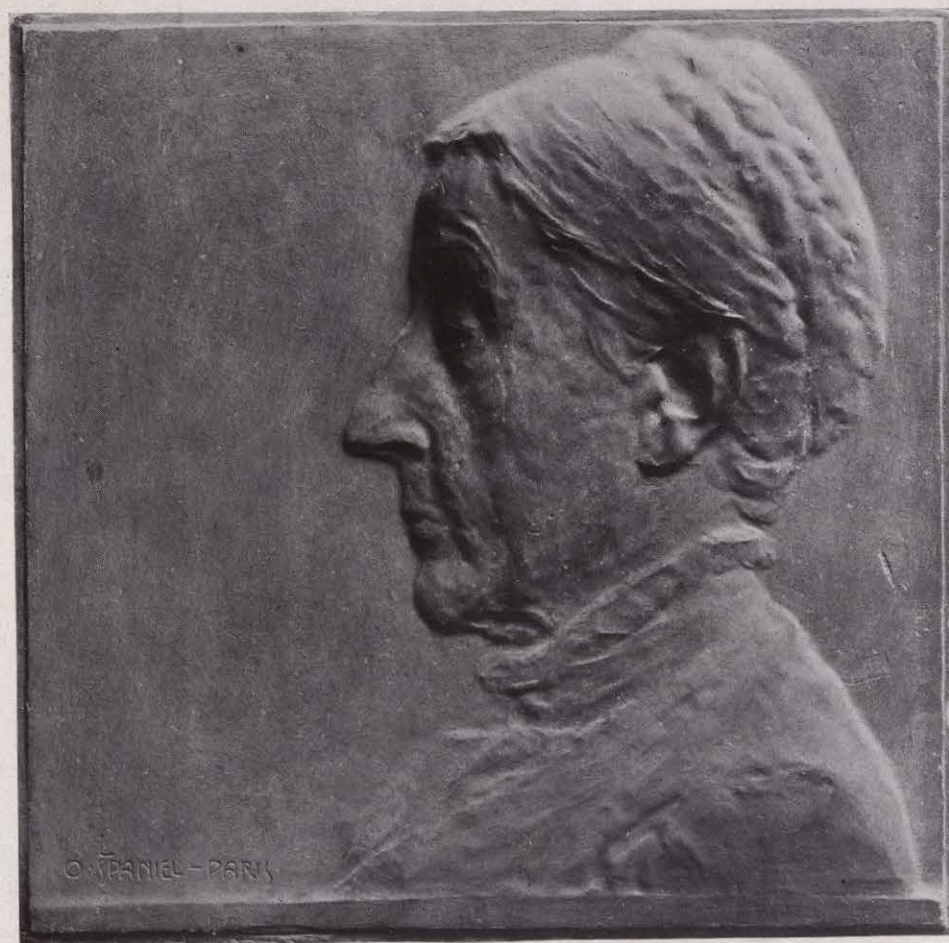


7

(Photograph from the cast model)



5



6

318

THEODORE SPICER-SIMSON

THEODORE SPICER-SIMSON, sculptor, medalist (British), was born in Havre, France. Studied at the École des Beaux-Arts, Paris. Began exhibiting in 1896, having that year examples of his work in the Salon, Paris, the Royal Academy and the New Gallery, London; exhibited nearly every year at the two former exhibitions. Elected associate member of the Société Nationale des Beaux-Arts, 1901. First undertook the making of medals in 1903, concurrently with his larger work, and his medals are exhibited in the museums of many British and Continental cities, Dresden, Frankfurt, Leipzig, Prague, Munich, The Hague, Brussels, New York, etc. Special articles on his work are to be seen in the French magazines of art, *L'Art Décoratif*, 1904, and *L'Art et Décoration* of September, 1903. Work mentioned with reproductions in the *Studio*, February 16, 1903, May 15, 1904, and September, 1905, and article in *Putnam's Magazine* for March, 1897. Spink's *Numismatic Circular* contains article on his medallic work, with a reproduction, in the number for February, 1905.

WORKS: portrait busts: *The Earl of Selborne*, Museum of Art, Johannesburg; *Dr. Moncure D. Conway*, at Dickinson College, Pennsylvania, and at the Author's Club, New York; *M. Henri Monod*, former director of the Sanitary Department of France; the *Maharaja of Bobbili, K.C.I.E.*; *Maharaja Doorga Churn Law*, in the Town Hall, Calcutta, India; etc. Other works are medals: *George F. Watts, R.A.*; *Sir Walter Lawrence, C.I.E.*; the *Duchess of Saxe-Coburg and Gotha*; *General Horace Porter*; *Barrett Wendell*; *George P. Baker*; *George Meredith*; etc. Address, 3 rue Campagne Première, Paris.

- 1 Admiral Sir Wilmot Fawkes, K.C.V.O., 1905. Cast medal (double), bronze, 125 mm.
- 2 Alexander B. Trowbridge, 1904. Cast medal (single), bronze, 105 mm.
- 3 Alfred Simson, 1904. Cast medal (single), bronze, 98 mm.
- 4 Alice Arbuthnot Simson, 1904. Cast plaquette (single), bronze, 110 x 76 mm.
- 5 Alice Peabody, 1906. Cast medal (single), bronze, 96 mm.
- 6 Anna B. Bliss, 1907. Cast medal (single), bronze, 95 mm.

319

- 7 Barrett Wendell, 1905. Cast medal (single), bronze, 110 mm.
 8 Charles Bach, 1904. Cast medal (single), bronze, 74 mm.
 9 Charles Peabody, 1906. Cast medal (single), bronze, 85 mm.
 10 Child, 1901. Cast medal (single), bronze, 101 mm.
 11 Edward T. Newell, 1904. Cast medal (single), bronze, 101 mm.
 12 E. F. Rechberg, 1907. Cast medal (single), bronze, 105 mm.
 13 Elizabeth S. Hammond, 1906. Cast medal (single), bronze, 65 mm.
 14 Ella Mielziner, 1906. Cast medal (single), bronze, 172 mm.
 15 Ernest Bengough Ricketts, 1904. Cast medal (single), bronze, 68 mm.
 16 Eva Murdocci and Bella Edwards, 1910. Plaque in plaster.
 17 G. B. Spicer-Simson, 1903. Cast medal (single), bronze, 77 mm.
 18 George F. Watts, 1904. Cast medal (single), bronze, 121 mm.
 19 George Meredith, 1908. Cast medal (single), bronze, 105 mm.
 20 George P. Baker, 1908. Cast medal (single), bronze, 119 mm.
 21 Gilbert Colgate, 1905. Cast medal (single), bronze, 60 mm.
 22 Henri Fritsch Estrangin, 1904. Cast medal (single), bronze, 91 mm.
 23 Herman Simson, 1904. Cast medal (single), bronze, 119 mm.
 24 Hilda Louise Spicer-Simson, 1910. Cast plaque (single), bronze, 148 x 101 mm.
 25 Hippolyte Louis, 1909. Cast medal (single), bronze, 116 mm.
 26 John Philip Wood, 1905. Cast medal (single), bronze, 115 mm.
 27 Lawrence Halsey, 1905. Cast medal (single), bronze, 93 mm.
 28 Louise S. Hammond, 1906. Cast medal (single), bronze, 114 mm.
 29 Louise W. Newman, 1904. Cast medal (single), bronze, 80 mm.
 30 Margaret Anglin, 1909. Plaque in plaster.
 31 Margaret Spicer-Simson, 1906. Cast medal (single), bronze, 118 mm.
 32 Mary Scovill Baxter, 1907. Cast medal (single), bronze, 103 mm.
 33 Max Rosenheim, 1910. Cast medal (single), bronze, 125 mm.
 34 Mildred Schmidt, 1905. Cast medal (single), bronze, 76 mm.
 35 Mildred C. Spicer-Simson, 1906. Cast medal (single), bronze, 78 mm.
 36 N. C. S. Simson, 1903. Cast medal (single), bronze, 76 mm.
 37 Noelie G. S. Simson, 1905. Cast medal (single), bronze, 106 mm.
 38 Otto Heutig, 1904. Cast medal (single), bronze, 126 mm.

- 39 Penelope King, 1904. Cast medal (single), bronze, 98 mm.
 40 Philip Carroll, 1905. Cast medal (single, oval), bronze, 123 x 107 mm.
 41 Princesse Alexander Meschersky, 1904. Cast medal (single), bronze, 112 mm.
 42 Sir Patrick Playfair, C.I.E., 1905. Cast medal (single), bronze, 83 mm.
 43 Sir Walter Lawrence, G.C.I.E., 1908. Cast plaque (single), bronze, 151 x 120 mm.
 44 T. Spicer-Simson, 1907. Cast medal (single), bronze, 68 mm.
 45 Victoria Adelheid, Duchess of Saxe-Coburg and Gotha, 1906. Cast medal (single), bronze, 101 mm.
 46 Waldron, 1905. Cast medal (single), bronze, 101 mm.
 47 Wilhelm von Scharfenberg, 1906. Cast medal (single), bronze, 116 mm.



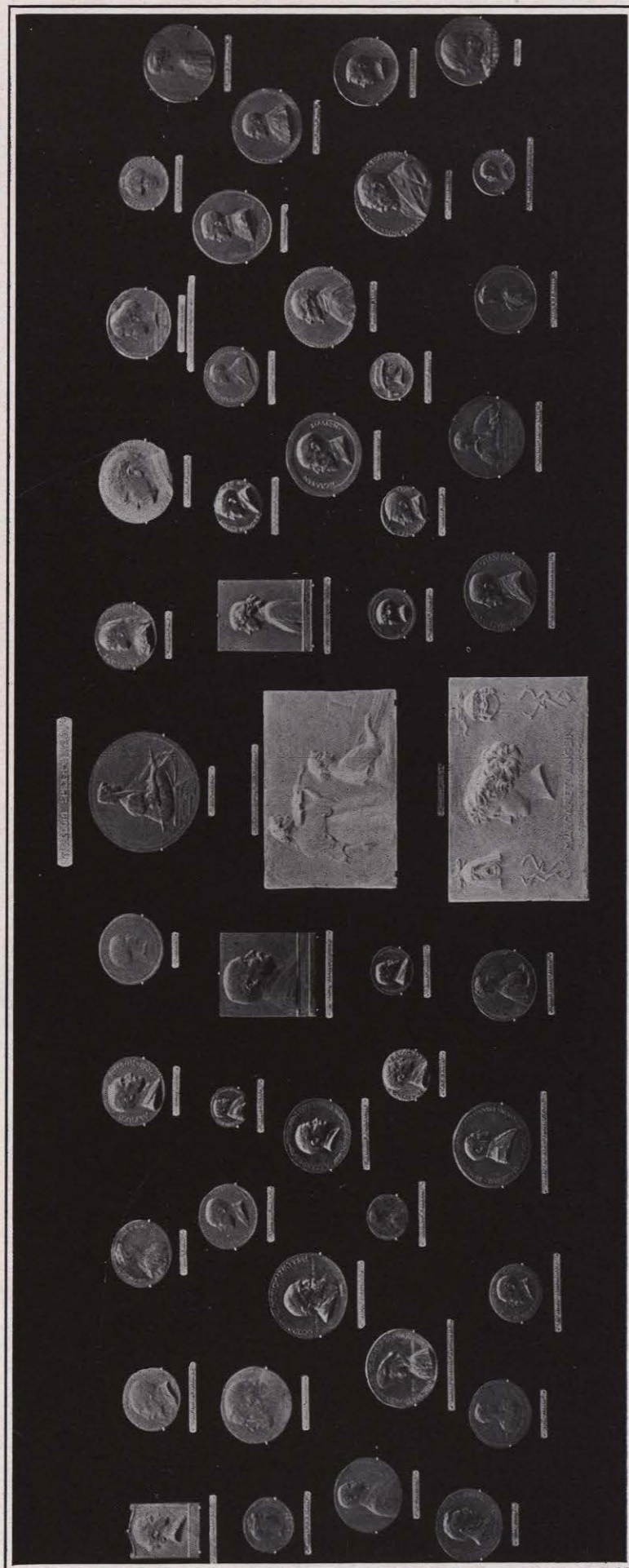
28



19



18



Nos. 1, 2, 3, 4, 5, 6, 7, 8, 9, 10, 11, 12, 13, 14, 15, 16, 17, 18, 19, 20, 21, 22, 23, 24, 25, 26, 27, 28, 29, 30, 31, 32, 33, 34, 35, 36, 37, 38, 39, 40, 41, 42, 43, 44, 45, 46, 47

CONSTANTIN STARCK

CONSTANTIN STARCK, sculptor, medalist (German), was born in Riga, Russia, 1866. Studied at the Art Academies in Stuttgart and Berlin. He received honorable mention for his first figure, *Flötenspieler*, at the Berlin Exposition of 1892, and medals at the Dresden International Exposition, 1904, the Berlin Exposition, 1904, and the Louisiana Purchase Exposition, 1904. He is represented in the National Gallery, Berlin, by the marble figure *Quelle* and the small bronze *Träumerei*; also in the Dresden Albertinum by the wax busts of women and by medals and plaquettes. He is a member of the Royal Academy of Arts, Berlin. Address, 35 Nassauische-strasse, Wilmersdorf, Berlin; studio, 1 Gasteinerstrasse.

- 1 Akademie der Wissenschaften zu Berlin, Leibnitzmedaille, 1907. Obverse and reverse. Struck medal, silver, 46 mm.
- 2 Fischerei, 1903. Obverse and reverse. Struck medal, copies in silver and Britannia metal, 60 mm.
- 3 Gartenbau. Struck medal, silver, 39 mm.
- 4 Graf Walderssee. Struck medal, silver, 34 mm.
- 5 Grossherzog von Hessen, 1905. Struck medal, silver, 48 mm.
- 6 Hygiene, Berlin, 1907. Struck medal, silver, 60 mm.
- 7 Jahrhundertswende, 1900-1901. Obverse and reverse. Struck medal, silver, 39 mm.
- 8 Kaiserin Friedrich. Struck medal, silver, 46 mm.
- 9 Krankenpflege, Schwesternschaft der Stadt Berlin. Struck medal, silver, 34 mm.
- 10 Jubiläum der Stadt Riga. Obverse and reverse. Struck medal, silver, 56 mm.
- 11 Pallas Athena. Struck medal, silver, 46 mm.
- 12 Pomona. Struck medal, silver, 43 mm.
- 13 Taufmedaille. Obverse and reverse. Struck medal, silver, 46 mm.
- 14 Brochen aus Silber (10), Architektur, Bacchus, Hebe, Kunstgewerbe, Malerei, Merkur, Musik, Plastik, Poesie, Ruhm, 21 x 21 mm.
- 15 Halskette mit vier kleinen Plaketten, Bacchus, Malerei, Plastik, Poesie, 13 mm.