

- 3 Conseil Municipal de La Rochelle, 1902. Struck plaquette, bronze, 63 x 45 mm.
- 4 Concours de Façades de la Ville de Paris, 1908. Struck plaquette, bronze, 73 x 59 mm.
- 5 Docteur Antoine Florand, 1905. Plaquette, galvano silvered, 120 x 90 mm. (cast (single) bronze, 120 x 90 mm.).
- 6 Docteur J. B. Duguet, 1903. Struck plaquette, bronze, 60 x 47 mm. (cast (single) bronze, 120 x 80 mm.).
- 7 Docteur V. Hanot, 1906. Struck plaquette, bronze, 57 x 48 mm.
- 8 Georges Veyrat, 1907. Plaquette, galvano silvered, 120 x 100 mm. (cast (single) bronze, 120 x 100 mm.).
- 9 Maurice Faure, Sénateur, 1906. Struck medal, bronze, 63 mm.
- 10 Professeur A. Gilbert, Docteur en Médecine, 1906. Struck plaquette, bronze, 71 x 52 mm.
- 11 Professeur Paul Bar, Docteur en Médecine, 1908. Struck plaquette, bronze, 62 x 50 mm.
- 12 Sénateur Frédéric Desmons, 1909. Struck plaquette, bronze, 69 mm. (cast (single) bronze, 190 x 150 mm.).
- 13 Vierge aux Lys, 1904. Plaque, galvano silvered (cast (single) bronze, 26 x 12.5 cm.).
- 14 Ville de Paris, 1900. Medal, galvano, 120 mm. (cast (single) bronze, 120 mm., 1901; for struck medals with this obverse, cf. F. Maze-rolle, "G.-H. Prud'homme," Nos. 2, 12, 13):



Nos. 1, 2, 3, 4, 5, 6, 7, 8, 9, 10, 11, 12, 13, 14

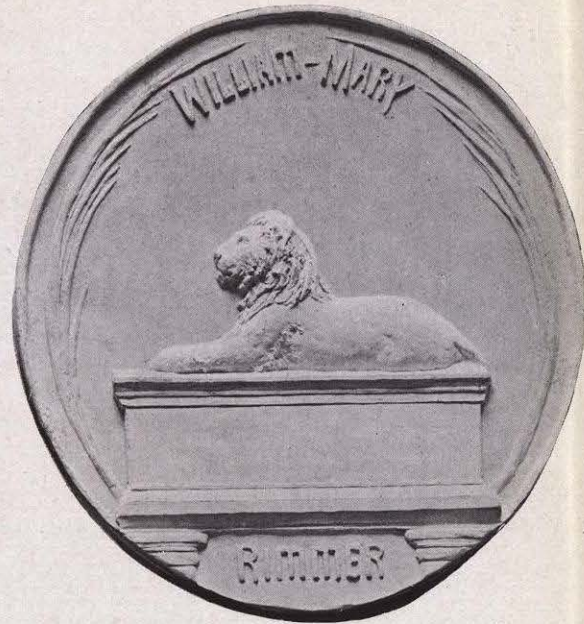
## CAROLINE HUNT RIMMER

CAROLINE HUNT RIMMER, sculptor, medalist (American), was born in Randolph, Massachusetts, in 1851. She is the daughter of Dr. William Rimmer (1816-79), who was from 1866 to 1870 director of the School of Design of the Cooper Institute, lecturer on art at the Lowell Institute, Harvard University, and the National Academy of Design, the sculptor of *St. Stephen*, *Osiris*, *The Falling Gladiator*, and *Alexander Hamilton*, and the author of "Elements of Design" and of "Art Anatomy." She studied under her father, receiving a silver medal while at the Cooper Institute. She received honorable mention for work sent to the World's Fair at Chicago, 1893; also honorable mention for bronze vases sent to Paris Exposition, 1900. She is the author of "Figure Drawing for Children" (Boston, 1893), and of "Animal Drawing: A Series of Thirteen Plates with Descriptive Text" (Boston, 1895). Address, Belmont, Massachusetts, and 4 St. Botolph Studios, Boston.

- 1 Dr. William and Mary H. C. Rimmer (parents of the artist), 1910. Obverse and reverse. Medallion in plaster, 26.7 cm.
- 2 Adeline Eunice Wilson, In Memory, 1901. Obverse and reverse. Medallion in plaster, 152 mm.
- 3 Psyche and Mors (Death driven away by the Soul), 1910. Medallion in terra-cotta, 171 mm.
- 4 Sketch A, Flying Cloud, 1901. Medal in terra-cotta, 70 mm.
- 5 Sketch B, The Cherub's Crown, 1901. Medal in terra-cotta, 102 mm.
- 6 Sketch C, A Benefactor, 1910. Medallion in terra-cotta, 152 mm.
- 7 Tablet, in memory of Adeline Rimmer Durham, 1910. Plaquette (lozenge-shaped) in terra-cotta, 140 x 102 mm.







ANNE GREGORY VAN BRIGGLE RITTER  
(MRS. ÉTIENNE RITTER)

ANNE GREGORY VAN BRIGGLE RITTER, painter (American), was born in Plattsburg, New York. She studied painting for five years under Charles Melville Dewey, and for some years in Paris and in Berlin. In 1900 she went to Colorado Springs, where she assisted her husband in making pottery. She has exhibited both paintings and pottery in the Salon and also in New York, Philadelphia, Boston, Chicago, and St. Louis. She was awarded a bronze medal for pottery in the Fine Arts Exhibit at St. Louis. She is a member of the National Society of Craftsmen, master craftsman in the Boston Society of Arts and Crafts, member of the New York Ceramic Society, associate member of the American Ceramic Society and of the American Federation of Arts. At present she devotes herself to designing and making pottery and tiles for interior and exterior use. Address, 1712 North Nevada Avenue, Colorado Springs, Colorado.

1 Decorative landscape panel. Terra-cotta (glazed).

LOUIS AUGUSTE THÉODORE RIVIÈRE  
(THÉODORE RIVIÈRE)

LOUIS AUGUSTE THÉODORE RIVIÈRE, sculptor (French), was born in Toulouse in 1851. Pupil of Jouffroy, Falguière, and Mercié. 1890-93 instructor at the Lycée, Carthage (Tunis). Member of Société des Artistes Français since 1889. He was made officer of the Legion of Honor in 1906.

WORKS: *La Musique; Orientale; Salammbô chez Matho*, bronze and ivory, Musée de Luxembourg; portrait statuettes; *Pasteur, Melchnikoff, O. Roty, A. Mariani, Claretie, Mistral, de Hérédia*, etc.; *Les Deux Douleurs*, marble, 1903; *Statue du roi d'Annam*, 1903; *La Vie*, group, 1906; *Les Parques; Triomphe des Courtisanes*, ivory group, belonging to Mme. Paquin; *Bacchus*, ivory statuette, both at Paris Salon, 1910. Address, 99 rue Mozart, Paris.

1 Frédéric Mistral. Bronze statuette.

2 La Danse Voilée. Bronze statuette.



- 3 Le Silence. Bronze statuette.  
 4 Messe de Minuit. Gray marble statuette.  
 5 Porteuses d'Offrandes Cambodgiennes. Bas-relief in bronze and gilt.  
 6 Portrait d'un Amateur. Bronze statuette.  
 7 Salut à l'Ainé. Bronze statuette.  
 8 Souvenir d'Alexandrie. Marble statuette.



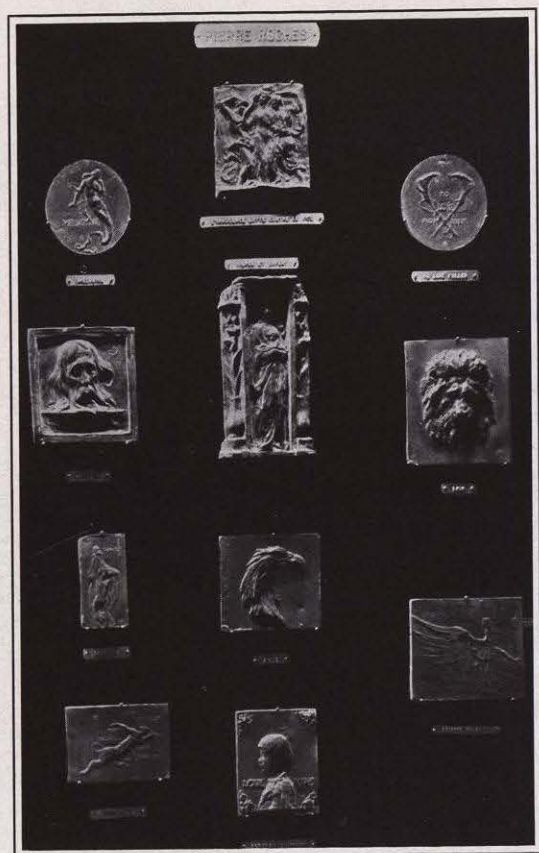
## PIERRE ROCHE

PIERRE ROCHE, sculptor, medalist (French), was born in Paris. He was a pupil of Roll and of Dalou. He is an associate sculptor of the Société Nationale des Beaux-Arts, and member of the permanent jury of the city of Paris at the Musée Galliéra. He received a silver medal during the Paris Exposition of 1900. In decorative sculpture and design he has made some interesting essays in the *art moderne* style. Among his best-known works are the fountain *Avril*, Musée Galliéra, and *l'Effort* in the garden of the Luxembourg, Paris. His medals are exhibited at the Luxembourg and the Petit Palais. Address, 25 rue Vaneau, Paris.

- 1 Aigle, 1905. Cast plaquette, lead bronzed, 95 x 110 mm.  
 2 Centauresse, 1897. Cast plaquette, lead bronzed, 65 x 112 mm.  
 3 Femme Volante, 1908. Cast plaquette, lead bronzed, 117 x 95 mm.  
 4 L'Innocence Lutte contre le Vice et la Violence, 1896. Cast plaquette, lead bronzed, 100 x 100 mm.  
 5 Lion, 1905. Cast plaquette, lead bronzed, 110 x 110 mm.  
 6 Loie Fuller (medal of the Société des Amis de la Médaille Française), 1900. Reverse. Cast medal, lead bronzed, 71 mm.  
 7 Mélusine, 1900. Cast medal, lead bronzed, 71 mm.  
 8 Portrait d'Enfant, Louis, 1887. Cast plaquette, lead bronzed, 100 x 100 mm.  
 9 Souhais Nouveaux. Cast plaquette, lead bronzed, 90 x 50 mm.  
 10 St. Jean, 1902. Cast plaquette, lead bronzed, 120 x 120 mm.  
 11 Vierge et Enfant, 1890. Cast plaquette, lead bronzed, 150 x 110 mm.







Nos. 1, 2, 3, 4, 5, 6, 7, 8, 9, 10, 11



10

## GEORG ROEMER

GEORG ROEMER, sculptor, medalist (German), was born in Bremen, 1868. He studied in Dresden, Berlin and Paris, and went thence to Rome and Florence, where he lived for twelve years. Since 1904 he has resided in Munich. He is well known by his many works in stone and bronze, his medals and portraits. His principal works are in Bremen, Hamburg, Lübeck, Berlin, Munich, and Rome.

II 01

- 1 Allerseelen, 1905. Obverse and reverse. Struck medal (dies cut by hand), copies in bronze, bronze silvered, and silver, 44 mm.
- 2 Deutsches Bundesschiessen, München, 1906. Obverse and reverse. Struck medal (dies cut by hand), silver, 38 mm.
- 3 *The same.* Obverse and reverse. Struck medal (dies cut by hand), silver gilt and gold, 27 mm.
- 4 Erntezeit, 1904. Obverse and reverse. Struck medal (dies cut by hand), copies in bronze, bronze silvered, and silver, 44 mm.
- 5 Franz Schuette, 1906. Cast medal (double, modeled in actual size), silver, 70 mm.
- 6 Frühling, 1904. Obverse and reverse. Struck medal (dies cut by hand), bronze, bronze silvered, and silver, 44 mm.
- 7 Herzog Georg von Sachsen-Meiningen, 1907. Obverse and reverse. Cast medal (double, modeled in actual size), copies in silver and in bronze, 59 mm.
- 8 Vita Beata, 1906. Cast medal (double, modeled in actual size), silver, 68 mm.
- 9 Weihnachten, 1904. Obverse and reverse. Struck medal (dies cut by hand), copies in silver and in bronze, 42 mm.