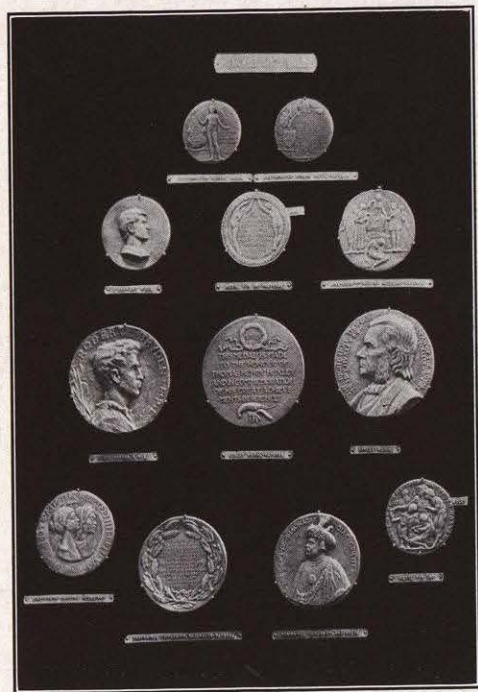


DAVID MCGILL

DAVID MCGILL, sculptor, medalist (British), was born in Scotland. Studied at South Kensington and the Royal Academy; obtained the traveling studentship at the Royal Academy for sculpture. Made the statue of Sir Wilfrid Lawson, Bart. (the great temperance advocate in Parliament), now in the Thames Embankment Gardens. Address, 1 Scarsdale Villas, Kensington, London, W.

- 1 Art. Obverse and reverse. Struck medal, copper silvered, 89 mm.
- 2 Cambridge University, Prince de Bhaunagar, 1893. Obverse and reverse. Struck medal, copper silvered, 115 mm.
- 3 F. Derwent Underwood. Struck medal, copper silvered, 89 mm.
- 4 Nineteenth-Century Allegory. Obverse and reverse. Struck medal, copper silvered, 102 mm.
- 5 Robert Bryden, R.P.E. Struck medal, 134 mm.
- 6 St. Peter's College, Westminster. Obverse and reverse. Struck medal, copper silvered, 83 mm.
- 7 The Right Hon. Thomas Henry Huxley, F.R.S. Obverse and reverse. Struck medal, copper silvered, 134 mm.



Nos. 1, 2, 3, 4, 5, 6, 7



1

R. TAIT MCKENZIE

R. TAIT MCKENZIE, sculptor, medalist (American), was born in Almonte, Ontario, Canada, 1867. He was lecturer on artistic anatomy, Montreal Art Association, 1901; Harvard Summer School, 1901; Olympic Lecture Course, St. Louis, 1904. He has been professor and director of the department of physical education, University of Pennsylvania, since 1904.

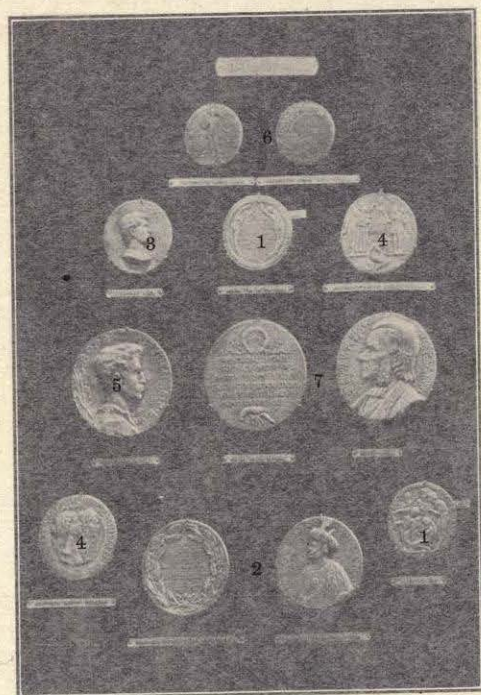
WORKS: *The Sprinter* (1902), Fitzwilliam Museum, Cambridge, England; *The College Athlete* (1903) (ibid.); *The Competitor* (1906), Metropolitan Museum, New York; *The Supple Juggler* (1909) (ibid.); *The Boxer* (1905); *The Relay*, 1910; Clark memorial (in the Pomfret School, Connecticut); Huger Medallion (University of Pennsylvania); *Samuel Jackson* and *Nathaniel Chapman* (memorial portrait bronzes in mezzo relief for the University of Pennsylvania). Since 1902, exhibitor at Salon des Artistes Français, Royal Academy, National Academy, and Pennsylvania Academy, Universal Exposition at St. Louis, 1904 (silver medal), and International Exposition, Brussels, 1910. Address, 26 South Twenty-first Street, Philadelphia.

- 1 Archibald Lampman, 1903. Cast medal, silver, 50 mm.
- 2 Charles Brockden Brown, Franklin Inn Club, 1908. Cast plaquette, bronze, 50 x 35 mm.
- 3 College of Physicians, Philadelphia, 1910. Struck medal, bronze, 70 mm.
- 4 Discobolus, No. 1, 1904. Cast plaquette, bronze, 170 x 100 mm.
- 5 Discobolus, No. 2, 1904. Cast plaquette, bronze, 170 x 100 mm.
- 6 Dorothy B., 1904. Cast medal, silver, 47 mm.
- 7 Dr. Dudley A. Sargent, 1907. Obverse and reverse. Struck medal, bronze gilt, 50 mm.
- 8 Dr. W. H. Drummond, 1907. Cast medal, bronze, 50 mm.
- 9 Francis Kinloch Huger Memorial. Cast medal, silver, 78 mm.
- 10 Gertrude Elliott, as Cleopatra, 1907. Cast medal, bronze, 50 mm.
- 11 Jeffrey MacPhail, 1904. Cast plaquette, bronze, 50 x 35 mm.
- 12 J. Forbes-Robertson, as Caesar, 1907. Cast medal, bronze, 50 mm.
- 13 Lisl, 1909. Cast medal, silver, 50 mm.
- 14 Sir William C. Van Horne, 1908. Cast medal, bronze, 135 mm.
- 15 Study of a Child, No. 1, 1909. Cast medal, bronze gilt, 50 mm.

DAVID MCGILL

DAVID MCGILL, sculptor, medalist (British), was born in Scotland. Studied at South Kensington and the Royal Academy; obtained the traveling studentship at the Royal Academy for sculpture. Made the statue of Sir Wilfrid Lawson, Bart. (the great temperance advocate in Parliament), now in the Thames Embankment Gardens. Address, 1 Scarsdale Villas, Kensington, London, W.

- 1 Art. Obverse and reverse. Struck medal, copper silvered, 89 mm.
- 2 Cambridge University, Prince de Bhaunagar, 1893. Obverse and reverse. Struck medal, copper silvered, 115 mm.
- 3 F. Derwent Underwood. Struck medal, copper silvered, 89 mm.
- 4 Nineteenth-Century Allegory. Obverse and reverse. Struck medal, copper silvered, 102 mm.
- 5 Robert Bryden, R.P.E. Struck medal, 134 mm.
- 6 St. Peter's College, Westminster. Obverse and reverse. Struck medal, copper silvered, 83 mm.
- 7 The Right Hon. Thomas Henry Huxley, F.R.S. Obverse and reverse. Struck medal, copper silvered, 134 mm.



Nos. 1, 2, 3, 4, 5, 6, 7



R. TAIT MCKENZIE

R. TAIT MCKENZIE, sculptor, medalist (American), was born in Almonte, Ontario, Canada, 1867. He was lecturer on artistic anatomy, Montreal Art Association, 1901; Harvard Summer School, 1901; Olympic Lecture Course, St. Louis, 1904. He has been professor and director of the department of physical education, University of Pennsylvania, since 1904.

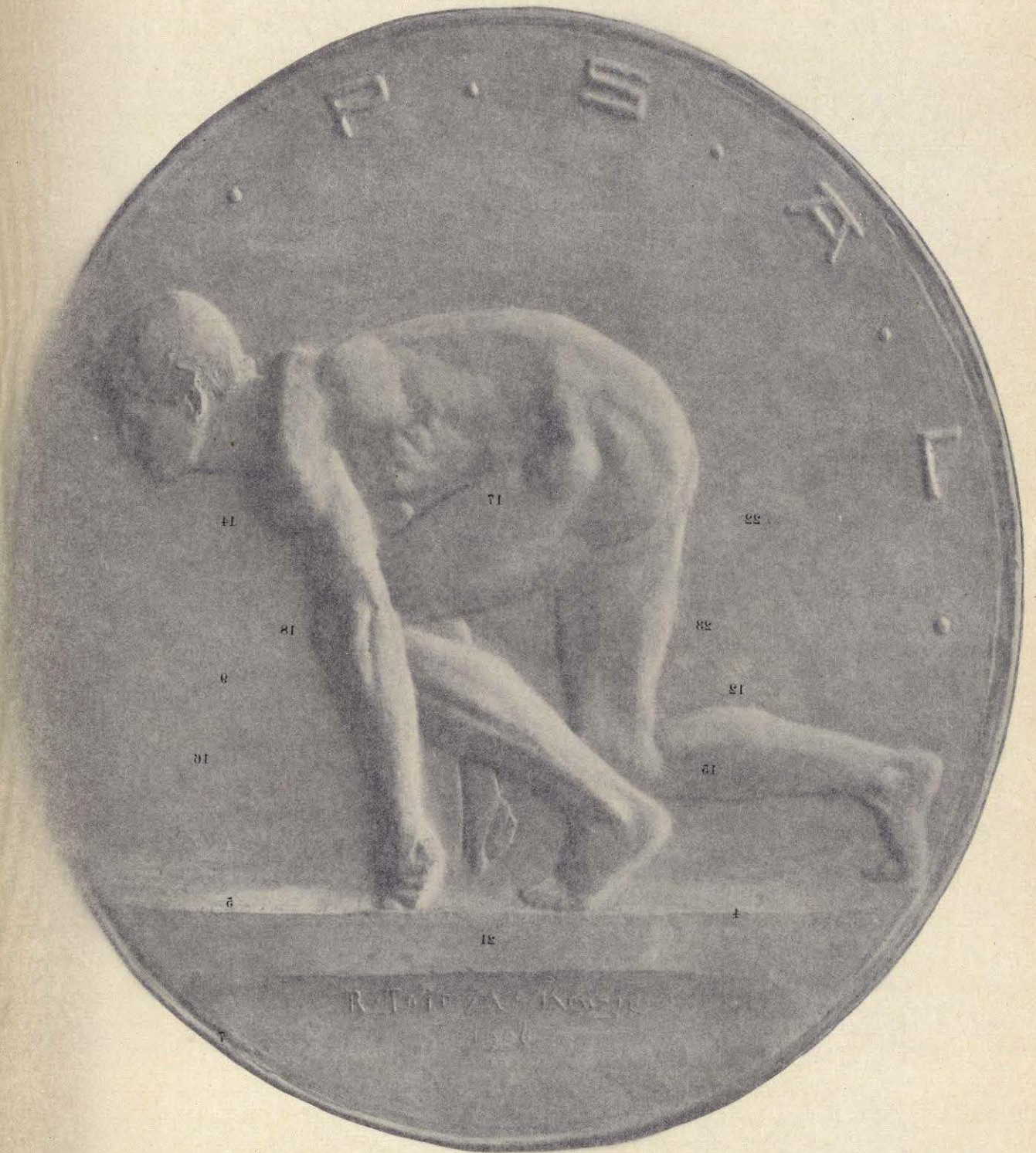
WORKS: *The Sprinter* (1902), Fitzwilliam Museum, Cambridge, England; *The College Athlete* (1903) (ibid.); *The Competitor* (1906), Metropolitan Museum, New York; *The Supple Juggler* (1909) (ibid.); *The Boxer* (1905); *The Relay*, 1910; Clark memorial (in the Pomfret School, Connecticut); Huger Medallion (University of Pennsylvania); *Samuel Jackson* and *Nathaniel Chapman* (memorial portrait bronzes in mezzo relief for the University of Pennsylvania). Since 1902, exhibitor at Salon des Artistes Français, Royal Academy, National Academy, and Pennsylvania Academy, Universal Exposition at St. Louis, 1904 (silver medal), and International Exposition, Brussels, 1910. Address, 26 South Twenty-first Street, Philadelphia.

- 1 Archibald Lampman, 1903. Cast medal, silver, 50 mm.
- 2 Charles Brockden Brown, Franklin Inn Club, 1908. Cast plaquette, bronze, 50 x 35 mm.
- 3 College of Physicians, Philadelphia, 1910. Struck medal, bronze, 70 mm.
- 4 Discobolus, No. 1, 1904. Cast plaquette, bronze, 170 x 100 mm.
- 5 Discobolus, No. 2, 1904. Cast plaquette, bronze, 170 x 100 mm.
- 6 Dorothy B., 1904. Cast medal, silver, 47 mm.
- 7 Dr. Dudley A. Sargent, 1907. Obverse and reverse. Struck medal, bronze gilt, 50 mm.
- 8 Dr. W. H. Drummond, 1907. Cast medal, bronze, 50 mm.
- 9 Francis Kinloch Huger Memorial. Cast medal, silver, 78 mm.
- 10 Gertrude Elliott, as Cleopatra, 1907. Cast medal, bronze, 50 mm.
- 11 Jeffrey MacPhail, 1904. Cast plaquette, bronze, 50 x 35 mm.
- 12 J. Forbes-Robertson, as Caesar, 1907. Cast medal, bronze, 50 mm.
- 13 Lisl, 1909. Cast medal, silver, 50 mm.
- 14 Sir William C. Van Horne, 1908. Cast medal, bronze, 135 mm.
- 15 Study of a Child, No. 1, 1909. Cast medal, bronze gilt, 50 mm.

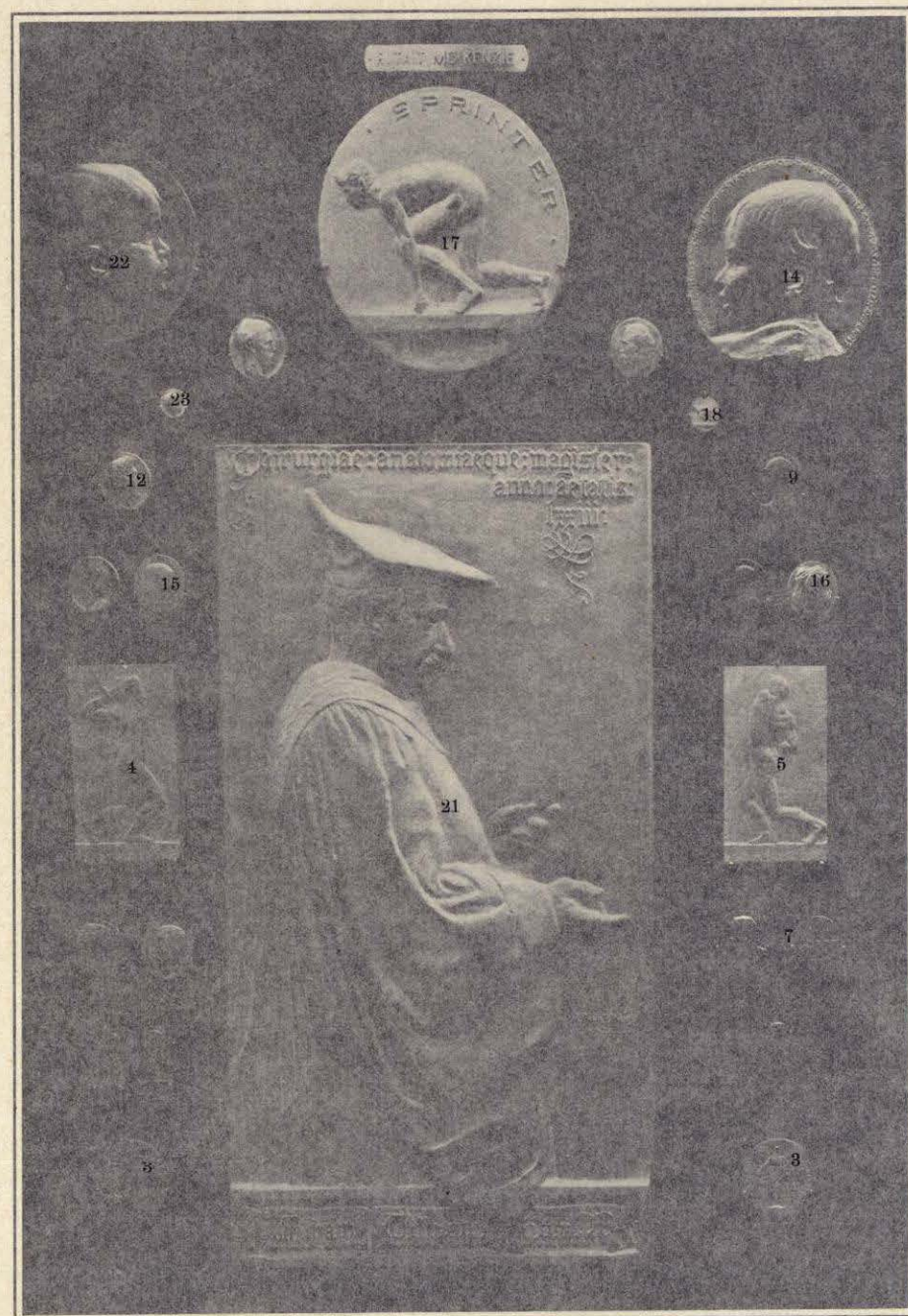
- 16 Study of a Child, No. 2, 1909. Cast medal, bronze gilt, 50 mm.
 17 The Sprinter, 1906. Cast medal, bronze, 180 mm.
 18 *The same*. Struck medal, gold, 30 mm.
 19 Wharton Stork, 1907. Cast medal, silver, 50 mm.
 20 Wilfred Campbell, 1906. Cast medal, silver, 50 mm.
 21 William Williams Keen, M.D. (original for Brown University, Providence, R. I.), 1909. Cast plaquette, silver, 175 x 100 cm.
 22 Wistfulness, 1905. Cast medal, bronze, 165 mm.
 23 *The same*. Cast medal, silver, 25 mm.



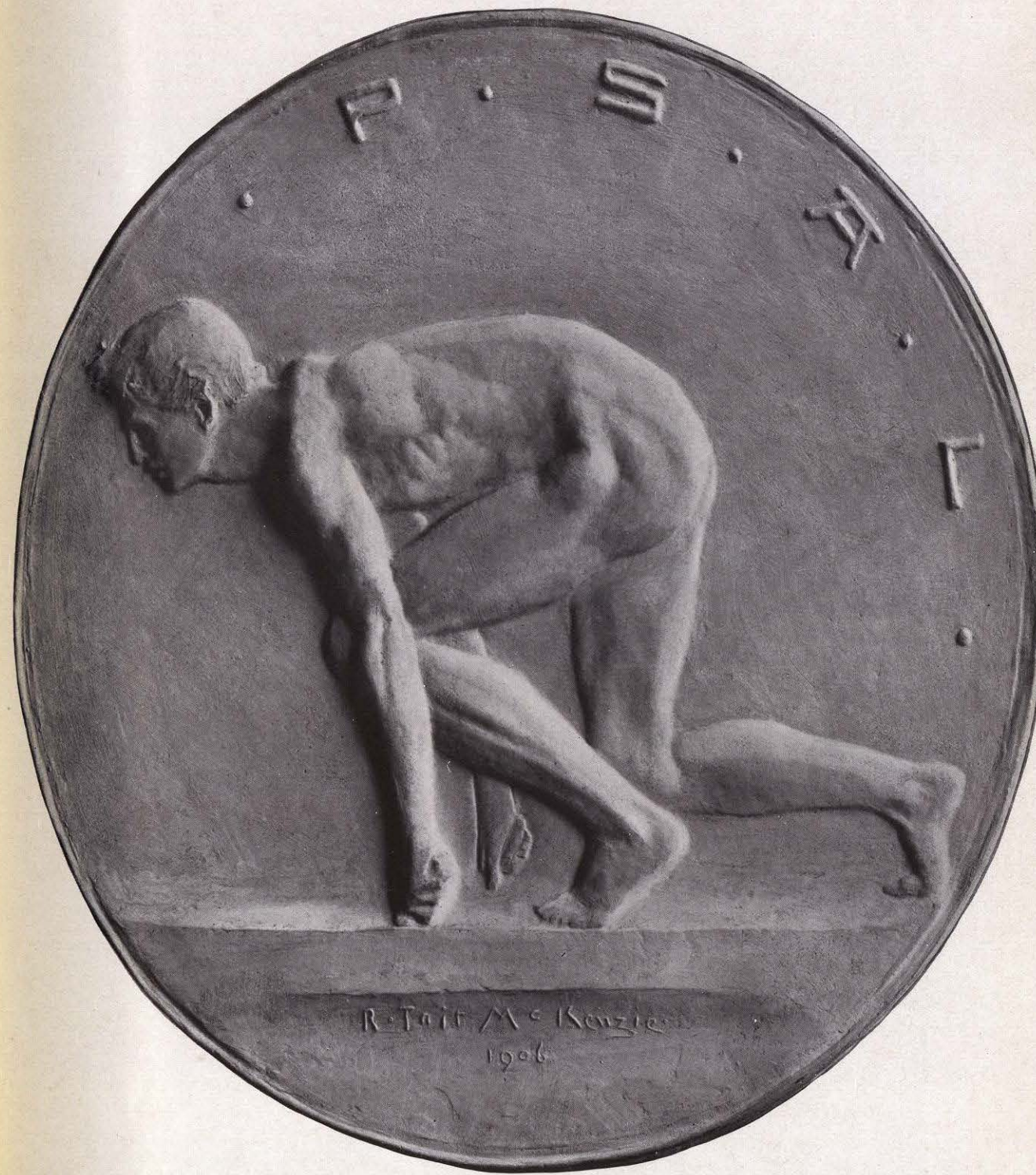
Nos. 1, 2, 3, 4, 5, 6, 7, 8, 9, 10, 11, 12, 13, 14, 15, 16, 17, 18, 19, 20, 21, 22, 23



- 16 Study of a Child, No. 2, 1909. Cast medal, bronze gilt, 50 mm.
 17 The Sprinter, 1906. Cast medal, bronze, 180 mm.
 18 *The same*. Struck medal, gold, 30 mm.
 19 Wharton Stork, 1907. Cast medal, silver, 50 mm.
 20 Wilfred Campbell, 1906. Cast medal, silver, 50 mm.
 21 William Williams Keen, M.D. (original for Brown University, Providence, R. I.), 1909. Cast plaquette, silver, 175 x 100 cm.
 22 Wistfulness, 1905. Cast medal, bronze, 165 mm.
 23 *The same*. Cast medal, silver, 25 mm.



Nos. 1, 2, 3, 4, 5, 6, 7, 8, 9, 10, 11, 12, 13, 14, 15, 16, 17, 18, 19, 20, 21, 22, 23



17