

MRS. BERENICE FRANCIS LANGTON

BERENICE FRANCIS LANGTON, sculptor (American), was born in Erie County, Pennsylvania. Mrs. Langton's first regular study of art began under Augustus Saint-Gaudens. Later, 1902-04, she spent two years in Paris, working under the criticism of August Rodin. Her principal work has been portraits in relief and round, but she has also executed several fountains. She has exhibited at the St. Louis and the Baltimore Expositions. Address, 142 East Thirty-third Street, New York City.

- 1 Charles B. Bradley. Medallion in plaster.
- 2 Little Miss Langton in her Tenth Year, and Polly Smith. Plaque in plaster.



ALPHONSE EUGÈNE LECHEVREL

ALPHONSE EUGÈNE LECHEVREL, gem-engraver, medalist (French), was born in Paris in 1848. He was a pupil of Henri François, and is a member of the Société des Artistes Français and of its jury. The artist's productions in gem-engraving are very numerous. In 1877 and 1878 he was employed in England, at the Hodgetts, Richardson & Sons' glass-works at Stourbridge, to revive the art of carved vases in glass, in imitation of the famous Portland vase. His works are represented in Paris, at the Musée du Luxembourg, the Musée de la Monnaie, and the Musée des Arts Décoratifs; also, at the Hamburg Museum, etc. At the Salon of the Société des Artistes Français he obtained honorable mention in 1884, 1885, 1886; a third-class medal in 1888; a second-class medal in 1889; a first-class medal in 1899, together with a bronze and a silver medal. At the French International and Universal Exhibitions in Paris he has obtained, in 1878, 1889, and 1900, respectively, a silver medal, a gold medal, and a grand prize. He has obtained some other medals of high class at the exhibitions of the Société des Arts Décoratifs. He is an officier de l'instruction publique, president of the Société des Artistes Graveurs sur Pierres Fines Français, and secretary of the Société des Artistes Graveurs en Médailles Français. Address, 26 Place du Marché St. Honoré, Paris I.

- 1 Adolphe Blanche, 1893. Medal, galvano gilt (cast, bronze, 130 mm. and 90 mm.).
- 2 André Otten, Portrait d'Enfant. Plaquette, galvano gilt, 50 x 35 mm. (cast, bronze, 140 x 100 mm.).
- 3 *The same.* Medal, galvano gilt (also, cast, bronze).
- 4 Andrée Otten, 1896. Plaquette, galvano gilt, 50 x 35 mm. (cast, bronze, 140 x 100 mm.).
- 5 Armes d'Alliances du Baron de Errazu. Plaquette, galvano gilt.¹
- 6 Armes du Baron de Errazu. Plaquette, galvano gilt.
- 7 Armes et Effigie de la République Française, 1897. Obverse and reverse. Trial design for a coin, galvano silvered, 26 mm. (cast, bronze, 120 mm.) (second proof).

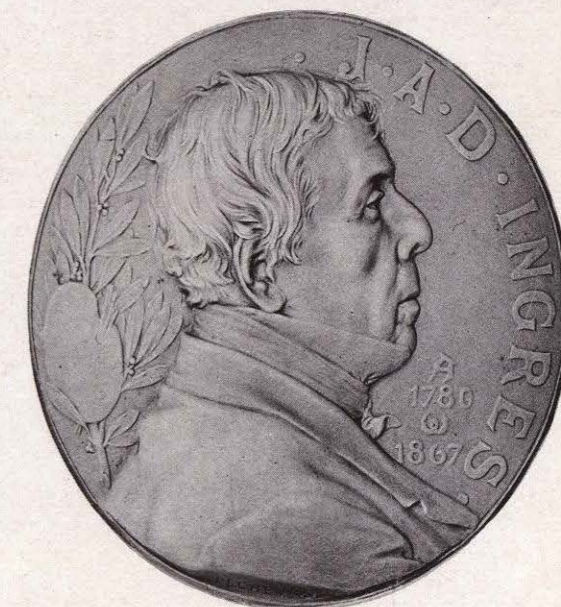
¹Nos. 5, 6, 11, 14, 16, and 17 are made from the topaz dies presented to the Musée des Arts Décoratifs by Baron de Errazu in 1890.

- 8 Armes de la République Française, 1897. Galvano silvered model of the reverse of the above, 110 mm. (cast, bronze, 120 mm.) (third proof).
- 9 Athéné, 1898. Medal, galvano silvered, 28 mm. (cast, bronze, 100 mm.; struck, 22 mm.).
- 10 *The same.* Medal, galvano gilt.
- 11 Baron de Errazu. Plaquette, galvano gilt.
- 12 Blanche Lechevrel, Portrait d'Enfant, 1895. Plaquette, galvano silvered, 50 x 35 mm. (cast, bronze, 140 x 100 mm.).
- 13 *The same.* Medal, galvano gilt.
- 14 Casque, Limier, Lambrequins, et Ruban, Devise du Baron de Errazu. Plaquette, galvano gilt.
- 15 Consultatio. Medal (oval), galvano gilt (from a die in sardonyx).
- 16 Croix de Calatrava. Plaquette, galvano gilt.
- 17 Croix de Calatrava, Cantonnée aux Armes d'Alliances du Baron de Errazu. Plaquette, galvano gilt.
- 18 Edward VII, Roi d'Angleterre, 1909. Obverse and reverse. Medal, galvano silvered, 100 mm. (cast medallion, bronze, 22 cm.) (first proof).
- 19 Félix Faure, Président de la République Française, 1896. Medal, galvano silvered, 40 mm. (cast, bronze, 120 mm.) (third proof).
- 20 Hommage aux Graveurs Français (edited by the French mint), 1890. Plaquette, galvano silvered, 66 x 48 mm. (cast, 175 x 120 mm.; struck, 66 x 48 mm.).
- 21 Humanité, Fraternité, 1908. Medal, galvano silvered, 100 mm. (cast medallion, bronze, 22 cm.) (first proof).
- 22 J. A. D. Ingres, 1904. Medal, galvano silvered, 80 mm. (cast, bronze, 180 mm.) (first proof).
- 23 J. Lechevrel, Portrait de Femme, 1890. Medal, galvano gilt.
- 24 Labore et Disciplina Resurgunt, 1890. Obverse and reverse. Plaquette, galvano silvered, 65 x 80 mm. (cast, bronze, 115 x 180 mm.; struck, 65 x 80 mm.).
- 25 L'Aurore, 1904. Plaquette, galvano gilt (from a die in sardonyx) (cast plaque, bronze, 27.5 x 21 cm.).
- 26 L'Histoire Enregistre les Découvertes de l'Archéologie, 1906. Obverse and reverse. Plaquette, galvano silvered, 69 x 80 mm. (cast plaque, bronze, 17 x 20 cm.; struck, 69 x 80 mm.) (second proof).

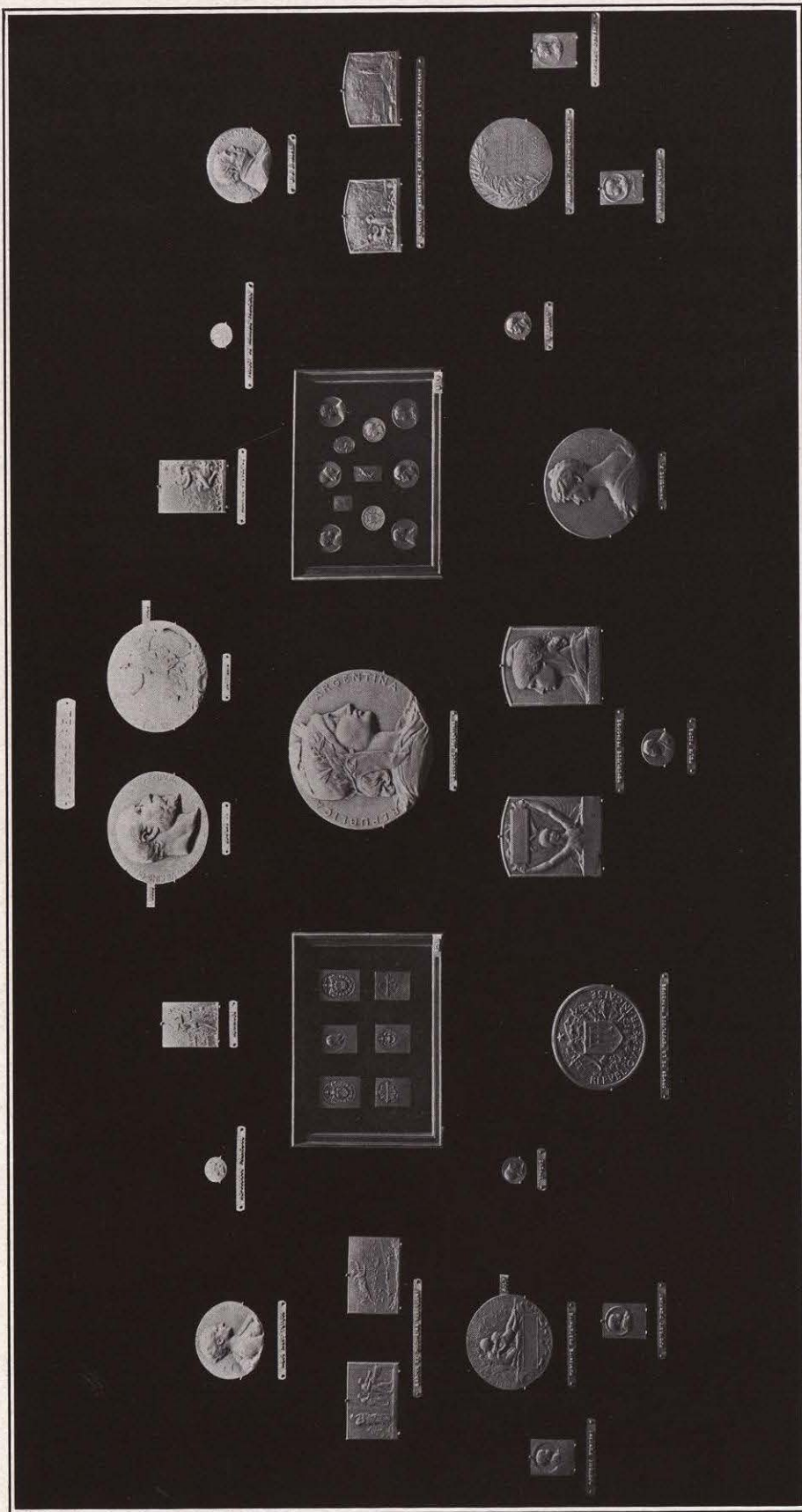
- 27 Madame X. Medal, galvano silvered, 118 mm. (cast medallion, bronze, 20 cm.) (first proof).
- 28 Maud Mary Taylor, 1902. Medal, galvano silvered, 80 mm. (cast, bronze, 140 mm.) (second proof).
- 29 Musique Sylvestre. Plaquette, galvano silvered, 80 x 65 mm. (cast plaque, bronze, 20 x 14 cm.) (first proof).
- 30 Republica Argentina, 1907. Medallion, galvano silvered, 175 mm. (cast, bronze, 175 mm.) (first proof).
- 31 République Française. Obverse and reverse. Plaquette, galvano silvered, 127 x 80 mm. (cast, bronze, 127 x 80 mm.) (first proof).
- 32 Sadi Carnot, Président de la République Française. Medal, galvano silvered, 30 mm. (from a die in sardonyx).
- 33 *The same.* Medal, galvano gilt.
- 34 Timbre-poste Français, 1893. Plaquette, galvano gilt.
- 35 Yvonne Otten, 1898. Plaquette, galvano silvered, 50 x 35 mm. (cast, bronze, 140 x 100 mm.).



21



22



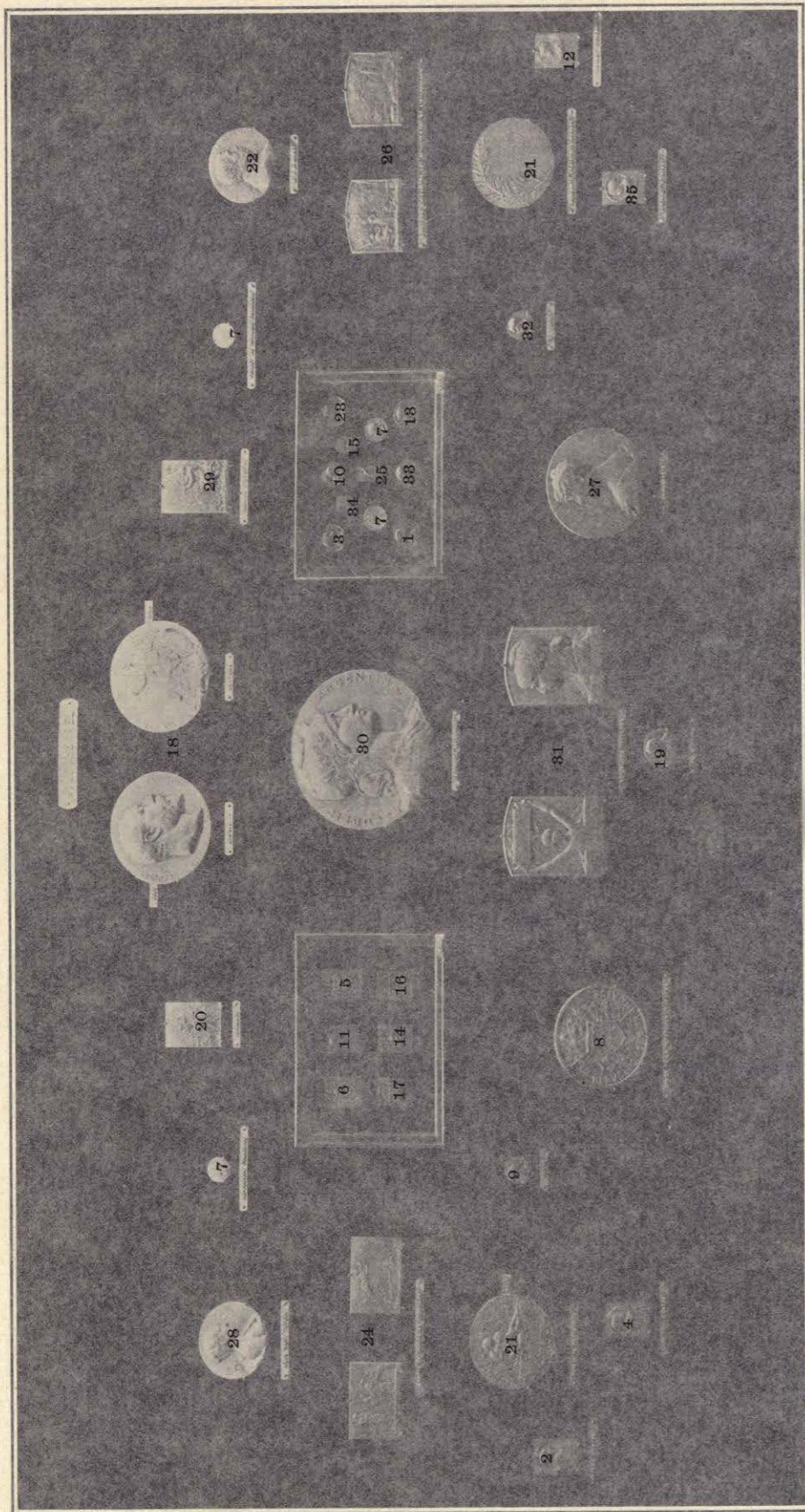
Nos. 1, 2, 3, 4, 5, 6, 7, 8, 9, 10, 11, 12, 13, 14, 15, 16, 17, 18, 19, 20, 21, 22, 23, 24, 25, 26, 27, 28, 29, 30, 31, 32, 33, 34, 35

JEAN LECROART

JEAN LECROART, medalist (Belgian), was born in Laeken, near Brussels, in 1883. He was apprenticed at a very early age in the trade of ornamental sculpture in Brussels, but had to abandon this to follow his parents to the country, and entered a factory at Ghent. Going to Paris, he took part in several medallic contests and at last drew attention to his works. Pupil of the Académie des Beaux-Arts of Ghent, and of H. Le Roy, medalist at Ghent. First exhibited in 1906 in Brussels, then in Antwerp, Ghent, Bonn, Düsseldorf, Berlin. Prizes: Société Hollandaise-Belge des Amis de la Médaille d'Art, first and second prizes; first prize in the class of fine arts of the Royal Academy of Belgium. Of his medals, *La Bière* (1906), *En Commémoration des Travaux de Bruxelles*, *Port de Mer* (1908), and *La Pensée* (1910) were struck specially for the Société Hollandaise-Belge des Amis de la Médaille d'Art. Address, 34 rue de la Poste, Schaerbeek, Belgium.

- 1 Bruxelles, Port de Mer, 1909 (medal of the Société Hollandaise-Belge des Amis de la Médaille d'Art). Struck medal, bronze, 65 mm.
- 2 Élèves des Écoles Communales. Struck badge, bronze.
- 3 Facteurs de Bruxelles. Struck badge, silver.
- 4 Foot-ball Club. Struck badge, bronze.
- 5 Jubilé Administratif de Saint-Josse-ten-Noode, 1909. Struck plaquette, bronze, 74 x 52 mm.
- 6 La Pensée, 1909. Struck plaquette, bronze, 64 x 45 mm.





Nos. 1, 2, 3, 4, 5, 6, 7, 8, 9, 10, 11, 12, 13, 14, 15, 16, 17, 18, 19, 20, 21, 22, 23, 24, 25, 26, 27, 28, 29, 30, 31, 32, 33, 34, 35

JEAN LECROART

JEAN LECROART, medalist (Belgian), was born in Laeken, near Brussels, in 1883. He was apprenticed at a very early age in the trade of ornamental sculpture in Brussels, but had to abandon this to follow his parents to the country, and entered a factory at Ghent. Going to Paris, he took part in several medallic contests and at last drew attention to his works. Pupil of the Académie des Beaux-Arts of Ghent, and of H. Le Roy, medalist at Ghent. First exhibited in 1906 in Brussels, then in Antwerp, Ghent, Bonn, Düsseldorf, Berlin. Prizes: Société Hollandaise-Belge des Amis de la Médaille d'Art, first and second prizes; first prize in the class of fine arts of the Royal Academy of Belgium. Of his medals, *La Bière* (1906), *En Commémoration des Travaux de Bruxelles, Port de Mer* (1908), and *La Pensée* (1910) were struck specially for the Société Hollandaise-Belge des Amis de la Médaille d'Art. Address, 34 rue de la Poste, Schaerbeek, Belgium.

- 1 Bruxelles, Port de Mer, 1909 (medal of the Société Hollandaise-Belge des Amis de la Médaille d'Art). Struck medal, bronze, 65 mm.
- 2 Élèves des Écoles Communales. Struck badge, bronze.
- 3 Facteurs de Bruxelles. Struck badge, silver.
- 4 Foot-ball Club. Struck badge, bronze.
- 5 Jubilé Administratif de Saint-Josse-ten-Noode, 1909. Struck plaquette, bronze, 74 x 52 mm.
- 6 La Pensée, 1909. Struck plaquette, bronze, 64 x 45 mm.



1



6



1