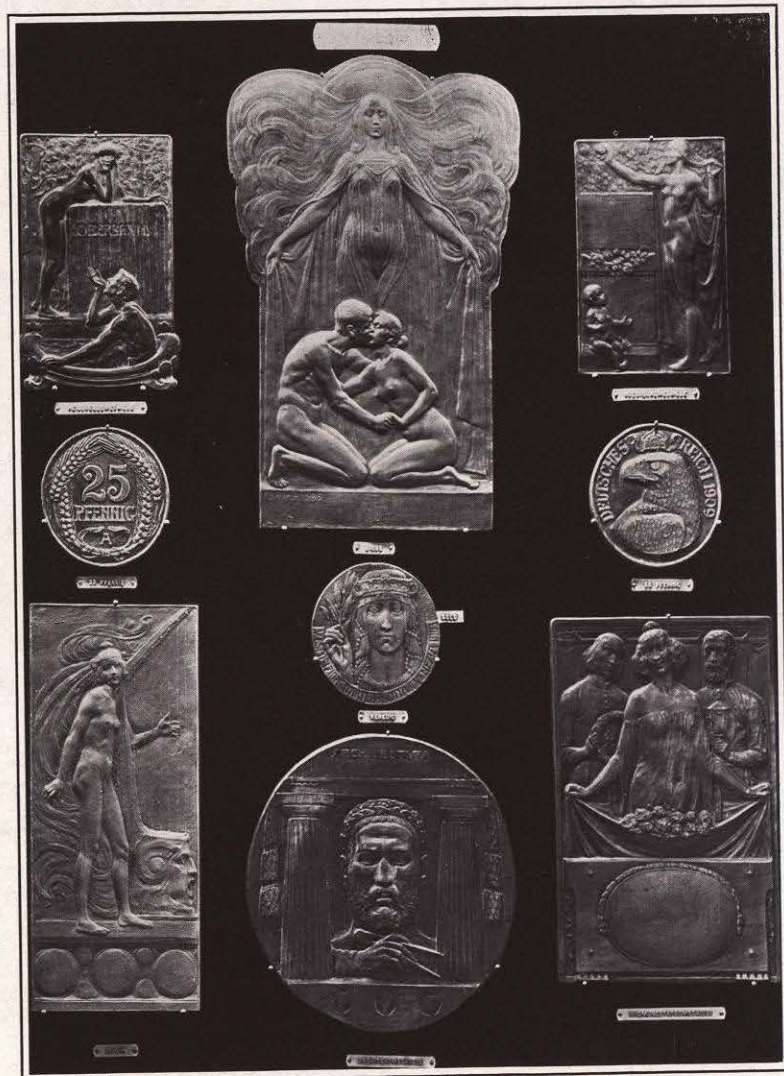


- 7 Musik, 1899. Plaque in plaster (tinted), 35 x 15 cm. (struck plaquette, 87 x 37 mm.).
- 8 Venedig, Ausstellung, 1903. Cast medal (single), bronze gilt, 117 mm.
- 9 Widmungstafel, 1904. Cast plaque (single), bronze, 30 x 21 cm.



Nos. 1, 2, 3, 4, 5, 6, 7, 8, 9

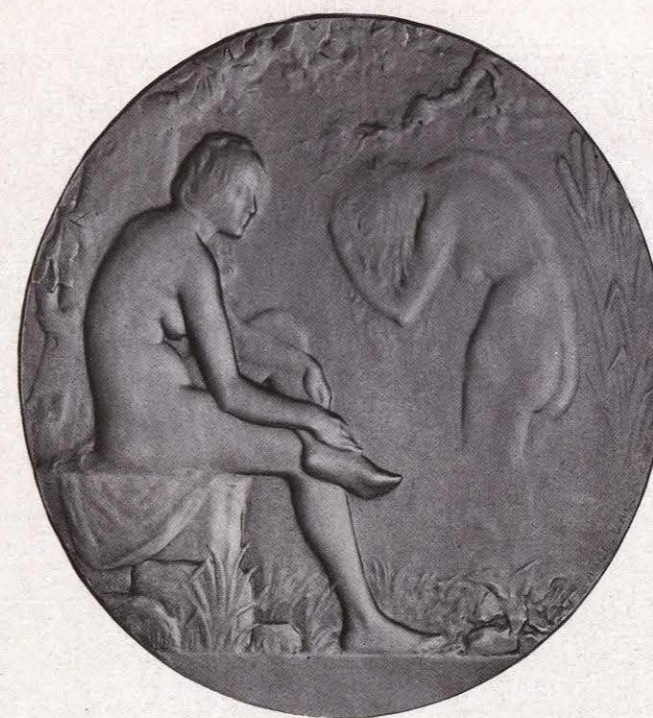
ABEL LAFLEUR

ABEL LAFLEUR, medalist (French), was born in Rodez, Aveyron, France. Studied at the Arts Décoratifs, and subsequently at the École des Beaux-Arts, Paris, having successively as professors Messrs. Ponscarne and Chaplain. He won several prizes at this school. During this period he also competed for the Prix de Rome. He worked for a long time with Alexandre Charpentier. In 1901 he began to exhibit at the Salon des Artistes Français, of which society he is a member. In 1903 he obtained an honorable mention; in 1905 a medal of the third class; in 1906 a Bourse de Voyage de l'État, a reward obtained only very rarely by medal-engravers, as only two have been so rewarded since 1874, the date of its foundation; finally, in 1909, a medal of the second class. Certain of his works are exhibited at Paris in the Luxembourg, Galliera, and Petit Palais museums, and in that of the Mint; in several provincial museums of France; abroad, at the South Kensington Museum, London, at Copenhagen, and in numerous private collections.

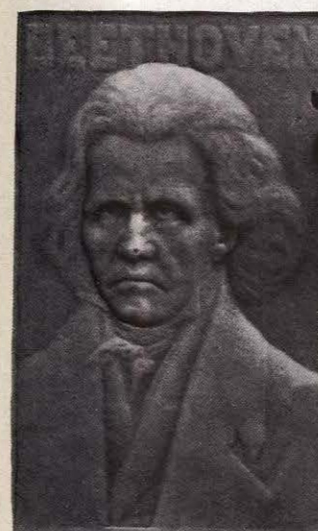
WORKS: *Femme au Bain*, executed for the Société des Amis de la Médaille française; *Beethoven*, *Diane*, and *Baigneuses* for the Administration Nationale des Monnaies et Médailles; *Chambre des Propriétaires*, *Tercentenary of Quebec*, *Congrès de Médecine et d'Hygiène* for the government of the Argentine Republic, *Vin Mariani*, etc. Among the portraits are the following: *Deloncle* and *Aujar*. Address, 50 rue St. Didier, Paris.

- 1 Baigneuses, 1908 (edited by the Mint at Paris). Struck medal, bronze, 54 mm.
- 2 The same, 1902. Cast medal (single), bronze, model for the above, 110 mm.
- 3 Beethoven, 1905. Struck plaquette, bronze, 73 x 49 mm.
- 4 Christ au Tombeau, 1904. Plaquette, galvano gilt, 41 x 150 mm.
- 5 Diane, 1908 (edited by the Mint at Paris). Struck medal, bronze, 54 mm.
- 6 Faune Dansant, 1906. Plaquette, galvano gilt, 151 x 90 mm.
- 7 Femme Accoudée Lisant, 1905. Struck plaquette, bronze 80 x 56 mm.

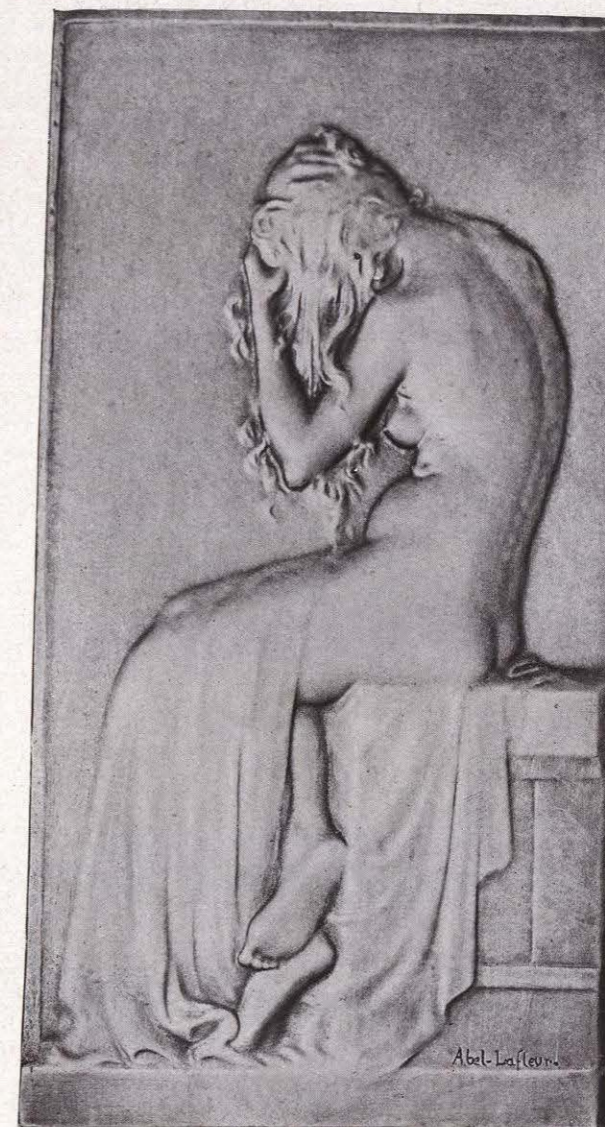
- 8 Femme Arrangeant des Fleurs, 1902. Cast plaque (single), bronze  
29.5 x 9.5 cm.
- 9 Femme Assise Lisant (L'Étude), 1900. Struck plaquette, bronze,  
82 x 81 mm.
- 10 Femme au Bain, se Coiffant, 1903 (plaquette of the Société des  
Amis de la Médaille française). Plaquette, galvano gilt, model,  
174 x 100 mm. (struck, 71 x 40 mm.).
- 11 Femme au Bain, 1903. Plaquette, galvano gilt, model, 174 x 100  
mm. (struck, 71 x 40 mm.).
- 12 Femme au Collet, 1898. Plaquette, galvano bronzed, 108 x 50 mm.
- 13 Femme au Face-à-Main, 1900. Struck plaquette, bronze, 80 x 40  
mm.
- 14 Femme au Gant, 1900. Struck plaquette, bronze, 80 x 40 mm.
- 15 Femme au Manchon (assise), 1900. Struck plaquette, bronze gilt,  
44 x 40 mm.
- 16 Femme au Manchon (debout), 1905. Struck plaquette, bronze,  
80 x 30 mm.
- 17 Femme au Manteau et à l'Ombrelle, 1907. Plaquette, galvano  
bronzed, 108 x 50 mm.
- 18 Femme Lisant dans un Parc, 1905. Struck plaquette, bronze,  
80 x 30 mm.
- 19 Femme Lisant (Intérieur), 1902. Plaquette, galvano bronzed,  
100 x 78 mm.
- 20 Femme Nue au Miroir, I, 1906. Plaquette, galvano silvered,  
110 x 34 mm.
- 21 Femme Nue au Miroir, II, 1906. Plaquette, galvano silvered,  
110 x 34 mm.
- 22 Femme Portant des Fleurs, 1902. Cast plaque (single), bronze,  
29.5 x 9.5 cm.
- 23 Le Livre d'Images, 1901. Struck plaquette, silver, 80 x 43 mm.
- 24 Léopold Aujar, 1897. Cast plaquette, bronze, 150 x 106 mm.
- 25 Rêverie, 1902. Plaquette in ivory, 62 x 75 mm.
- 26 Silhouette Parisienne, I, 1905. Plaquette, galvano gilt.
- 27 Silhouette Parisienne, II, 1905. Plaquette, galvano gilt.
- 28 Vieille Femme Drapée, 1902. Struck plaquette, bronze, 80 x 34  
mm.



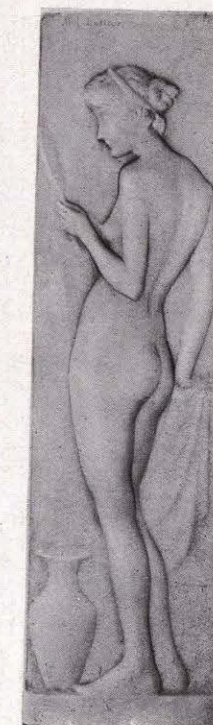
2



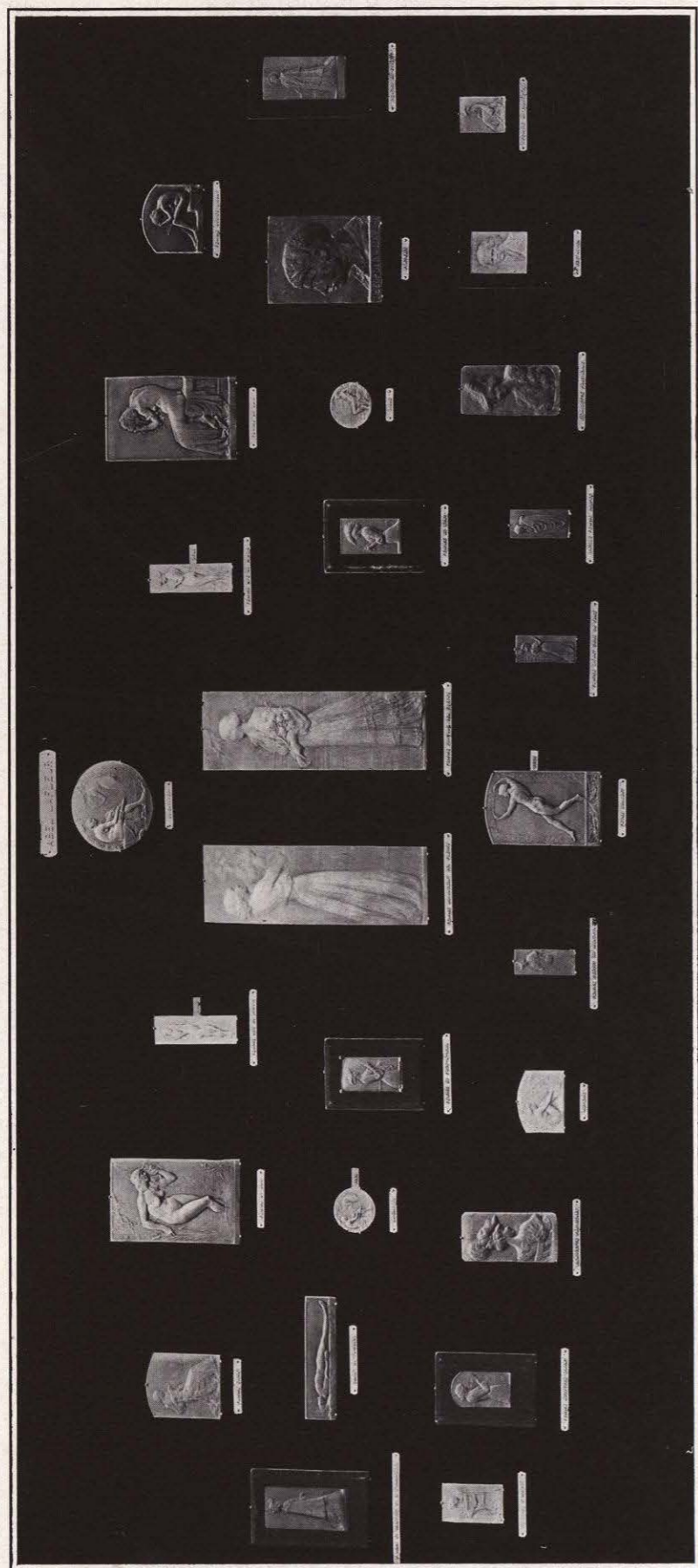
3



10



20



Nos. 1, 2, 3, 4, 5, 6, 7, 8, 9, 10, 11, 12, 13, 14, 15, 16, 17, 18, 19, 20, 21, 22, 23, 24, 25, 26, 27, 28

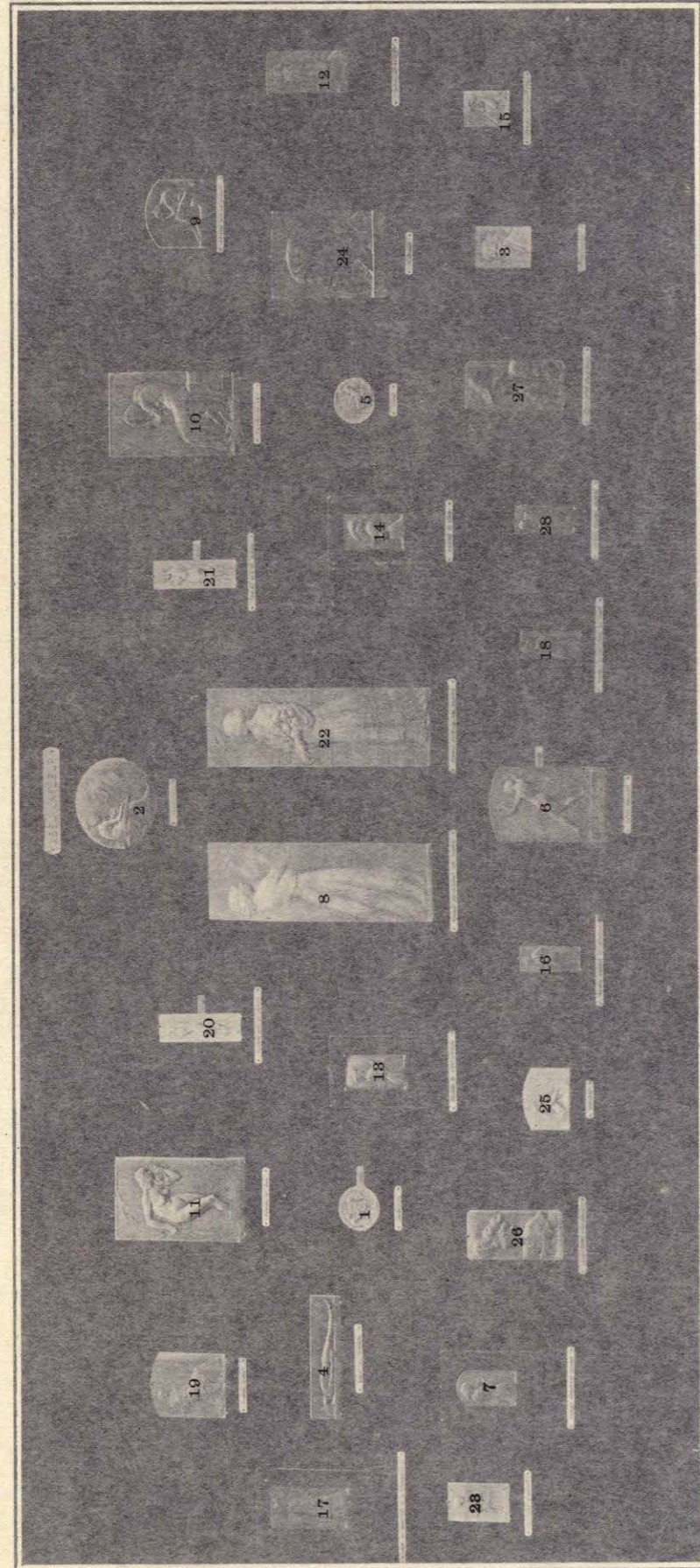
JULES LAGAE

JULES LAGAE, medalist (Belgian), was born in Roulers, Belgium, 1862. Pupil of Charles Vanderstappen and of Lambeaux. He has produced several decorative works, among the more notable being a medal for the Brussels Exposition of 1897 and the monument erected in memory of the poet Ledeganck; also *La Ville de Gand*, plaquette. In 1888 the artist obtained the Prix de Rome, and he is a knight of the Order of Leopold. Address, 8 avenue Michel-Ange, Brussels.

- 1 Chevaux Brabançons. Cast medallion, bronze.
- 2 M. Édouard Simon, Bourgmestre de Péruwelz, 1902. Struck medal, bronze, 68 mm.
- 3 M. Jules Van den Heuvel, Ministre d'État, 1907. Struck medal, silver, 49 mm.



Medal for the Exposition Internationale de Bruxelles, 1897



Nos. 1, 2, 3, 4, 5, 6, 7, 8, 9, 10, 11, 12, 13, 14, 15, 16, 17, 18, 19, 20, 21, 22, 23, 24, 25, 26, 27, 28

### JULES LAGAE

JULES LAGAE, medalist (Belgian), was born in Roulers, Belgium, 1862. Pupil of Charles Vanderstappen and of Lambeaux. He has produced several decorative works, among the more notable being a medal for the Brussels Exposition of 1897 and the monument erected in memory of the poet Ledeganck; also *La Ville de Gand*, plaquette. In 1888 the artist obtained the Prix de Rome, and he is a knight of the Order of Leopold. Address, 8 avenue Michel-Ange, Brussels.

- 1 Chevaux Brabançons. Cast medallion, bronze.
- 2 M. Édouard Simon, Bourgmestre de Péruwelz, 1902. Struck medal, bronze, 68 mm.
- 3 M. Jules Van den Heuvel, Ministre d'État, 1907. Struck medal, silver, 49 mm.



Medal for the Exposition Internationale de Bruxelles, 1897

MRS. BERENICE FRANCIS LANGTON

BERENICE FRANCIS LANGTON, sculptor (American), was born in Erie County, Pennsylvania. Mrs. Langton's first regular study of art began under Augustus Saint-Gaudens. Later, 1902-04, she spent two years in Paris, working under the criticism of August Rodin. Her principal work has been portraits in relief and round, but she has also executed several fountains. She has exhibited at the St. Louis and the Baltimore Expositions. Address, 142 East Thirty-third Street, New York City.

- 1 Charles B. Bradley. Medallion in plaster.
- 2 Little Miss Langton in her Tenth Year, and Polly Smith. Plaque in plaster.



ALPHONSE EUGÈNE LECHEVREL

ALPHONSE EUGÈNE LECHEVREL, gem-engraver, medalist (French), was born in Paris in 1848. He was a pupil of Henri François, and is a member of the Société des Artistes Français and of its jury. The artist's productions in gem-engraving are very numerous. In 1877 and 1878 he was employed in England, at the Hodgetts, Richardson & Sons' glass-works at Stourbridge, to revive the art of carved vases in glass, in imitation of the famous Portland vase. His works are represented in Paris, at the Musée du Luxembourg, the Musée de la Monnaie, and the Musée des Arts Décoratifs; also, at the Hamburg Museum, etc. At the Salon of the Société des Artistes Français he obtained honorable mention in 1884, 1885, 1886; a third-class medal in 1888; a second-class medal in 1889; a first-class medal in 1899, together with a bronze and a silver medal. At the French International and Universal Exhibitions in Paris he has obtained, in 1878, 1889, and 1900, respectively, a silver medal, a gold medal, and a grand prize. He has obtained some other medals of high class at the exhibitions of the Société des Arts Décoratifs. He is an officier de l'instruction publique, president of the Société des Artistes Graveurs sur Pierres Fines Français, and secretary of the Société des Artistes Graveurs en Médailles Français. Address, 26 Place du Marché St. Honoré, Paris I.

- 1 Adolphe Blanche, 1893. Medal, galvano gilt (cast, bronze, 130 mm. and 90 mm.).
- 2 André Otten, Portrait d'Enfant. Plaquette, galvano gilt, 50 x 35 mm. (cast, bronze, 140 x 100 mm.).
- 3 *The same.* Medal, galvano gilt (also, cast, bronze).
- 4 Andrée Otten, 1896. Plaquette, galvano gilt, 50 x 35 mm. (cast, bronze, 140 x 100 mm.).
- 5 Armes d'Alliances du Baron de Errazu. Plaquette, galvano gilt.<sup>1</sup>
- 6 Armes du Baron de Errazu. Plaquette, galvano gilt.
- 7 Armes et Effigie de la République Française, 1897. Obverse and reverse. Trial design for a coin, galvano silvered, 26 mm. (cast, bronze, 120 mm.) (second proof).

<sup>1</sup>Nos. 5, 6, 11, 14, 16, and 17 are made from the topaz dies presented to the Musée des Arts Décoratifs by Baron de Errazu in 1890.