



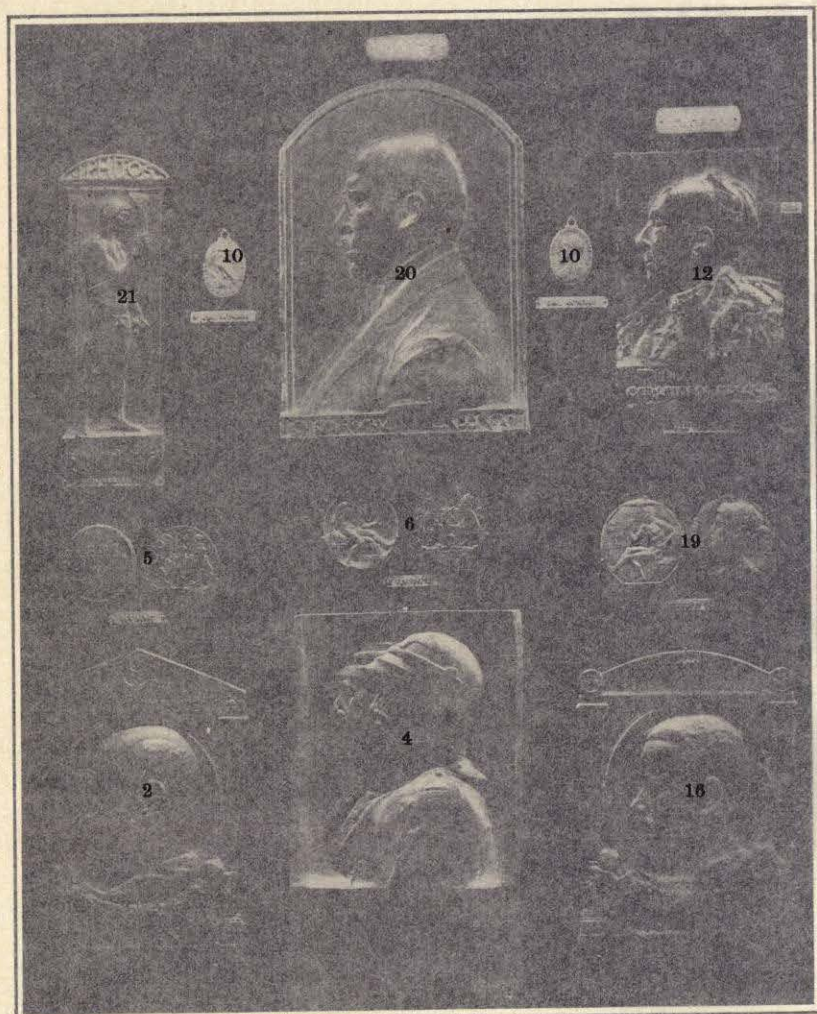
Nos. 1, 4, 5, 6, 10, 12, 16, 19, 20, 21

LILIAN V. HAMILTON
(MRS. VEREKER HAMILTON)

LILIAN V. HAMILTON, sculptor, medalist (British), was born in Surrey, 1865. She attended the Slade School, University College, London, in 1881, and studied sculpture for five years under Professor Alphonse Legros. Exhibited medals from about 1888, was an Associate of the Royal Society of Painter-Etchers, and exhibited etchings at the annual exhibitions for some years. Articles on Mrs. Vereker Hamilton's work have appeared in the *Magazine of Art*, July, 1901; the *Ladies' Field*, November 21, 1903; Spink's *Numismatic Circular*, June, 1906; Spielmann, "British Sculptors of To-day." Is represented in the Musée du Luxembourg and Le Petit Palais, Paris; the Victoria and Albert Museum, South Kensington, and in the Western Australia Museum and Art Gallery in Perth.

Mrs. Vereker Hamilton designed and made the gold medal in memory of Sir Henry Norman that is now given at Sandhurst twice a year; the "Roberts Trophy" shield given by Field-Marshal Earl Roberts in 1908, and "Roberts Trophy" medals; the "Solano Trophy" shield, given by Mr. E. Solano, in 1910; the medal given by Her Majesty Queen Alexandra to the Society of Miniature Rifle Clubs, and also the Jubilee Medal for the Ladies' College, Cheltenham, struck in silver and bronze in 1904. Address, 6 St. Alban's Mansions, Kensington, London.

- 1 Betty Hamilton, 1897. Cast medal, bronze, 89 mm.
- 2 Breton Peasant, 1900. Cast plaquette, bronze, 57 mm.
- 3 Castle Midmar, 1909. Cast medal, bronze, 121 mm.
- 4 Fatma, a Bishareen Arab, 1897. Cast medal, bronze, 70 mm.
- 5 Field-Marshal Lord Roberts, 1900. Cast medal, bronze, 115 mm.
- 6 Field-Marshal Sir Evelyn Wood, 1901. Cast medal, bronze, 115 mm.
- 7 Hon. Walter John James, 1903. Cast medal, bronze, 115 mm.
- 8 Ian Hamilton, 1895. Cast medal, bronze, 89 mm.
- 9 John C. Davis, Lieut. R. N., 1909. Cast medal, bronze, 121 mm.
- 10 Lady Hamilton, 1904. Cast medal, bronze, 115 mm.



Nos. 1, 4, 5, 6, 10, 12, 16, 19, 20, 21

LILIAN V. HAMILTON
(MRS. VEREKER HAMILTON)

LILIAN V. HAMILTON, sculptor, medalist (British), was born in Surrey, 1865. Entered the Slade School, University College, London, in 1881, and studied there for five years under Professor Alphonse Legros. Exhibited medals first about 1888, was an Associate of the Royal Society of Painter-Etchers, and exhibited etchings at the annual exhibitions for some years. Articles on Mrs. Vereker Hamilton's work have appeared in the *Magazine of Art*, July, 1901; the *Ladies' Field*, November 21, 1903; Spink's *Numismatic Circular*, June, 1903; Spielmann, "British Sculptors of To-day." Is represented in the Musée du Luxembourg and Le Petit Palais, Paris; the Victoria and Albert Museum, South Kensington, and in the Western Australia Museum and Art Gallery in Perth.

Mrs. Vereker Hamilton designed and made the gold medal in memory of Sir Henry Norman that is now given at Sandhurst twice a year; the "Roberts Trophy" shield given by Field-Marshal Earl Roberts in 1908, and "Roberts Trophy" medals; the "Solano Trophy" shield, given by Mr. E. Solano, in 1910; the medal given by Her Majesty Queen Alexandra to the Society of Miniature Rifle Clubs, and also the Jubilee Medal for the Ladies' College, Cheltenham, struck in silver and bronze in 1904. Address, 6 St. Alban's Mansions, Kensington, London.

- 1 Betty Hamilton, 1897. Cast medal, bronze, 89 mm.
- 2 Breton Peasant, 1900. Cast plaquette, bronze, 57 mm.
- 3 Castle Midmar, 1909. Cast medal, bronze, 121 mm.
- 4 Fatma, a Bishareen Arab, 1897. Cast medal, bronze, 70 mm.
- 5 Field-Marshal Lord Roberts, 1900. Cast medal, bronze, 115 mm.
- 6 Field-Marshal Sir Evelyn Wood, 1901. Cast medal, bronze, 115 mm.
- 7 Hon. Walter John James, 1903. Cast medal, bronze, 115 mm.
- 8 Ian Hamilton, 1895. Cast medal, bronze, 89 mm.
- 9 John C. Davis, Lieut. R. N., 1909. Cast medal, bronze, 121 mm.
- 10 Lady Hamilton, 1904. Cast medal, bronze, 115 mm.

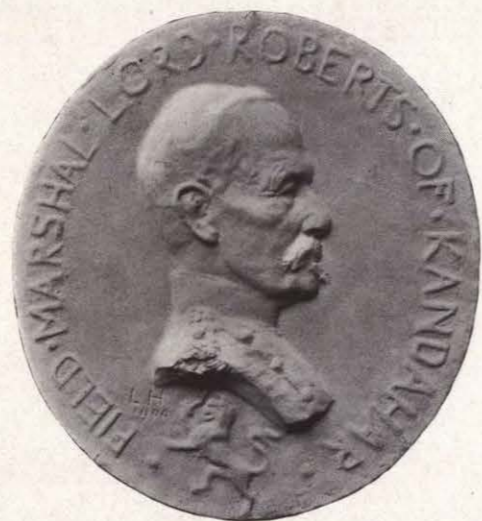
- 11 Marjorie Hamilton, 1909. Cast plaquette, bronze, 89 x 76 mm.
 12 Miss Beale, Principal of Ladies' College, Cheltenham, 1904. Cast medal (oval), bronze, 108 x 127 mm.
 13 Mrs. Huth, 1904. Cast medal (oval), bronze, 108 x 127 mm.
 14 Portrait of a Child. Cast medal, bronze, 76 mm.
 15 Portrait of a Young Girl. Cast medal, bronze, 70 mm.
 16 Society of Miniature Rifle Clubs, Design for the Queen's Cup Gold Medal. Cast medallion, bronze, model, 140 mm.
 17 The Rajah of Kapurthala, 1890. Obverse and reverse. Cast medal, bronze, 127 mm.
 18 Trotting Camels, 1909. Cast medal, bronze, 159 mm.
 19 Viscount Gort, 1899. Obverse and reverse. Cast medal, bronze, 115 mm.



4



14



5

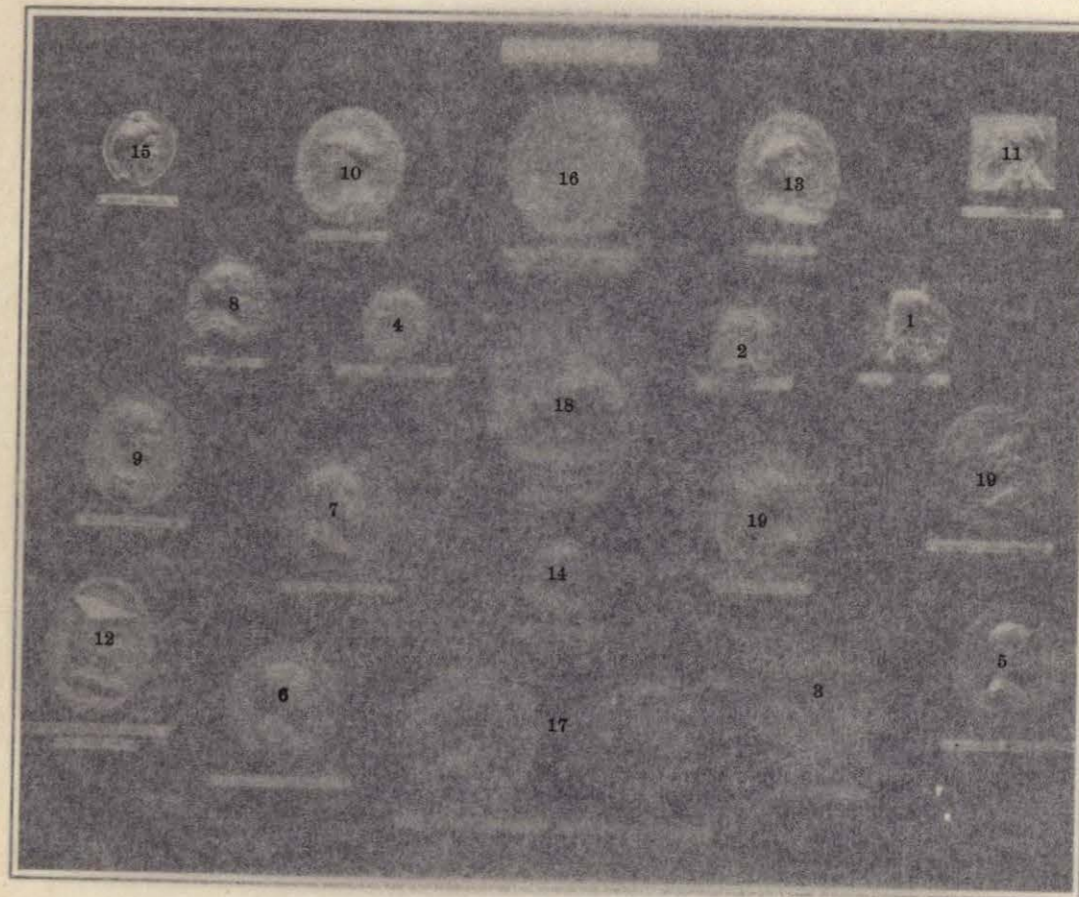
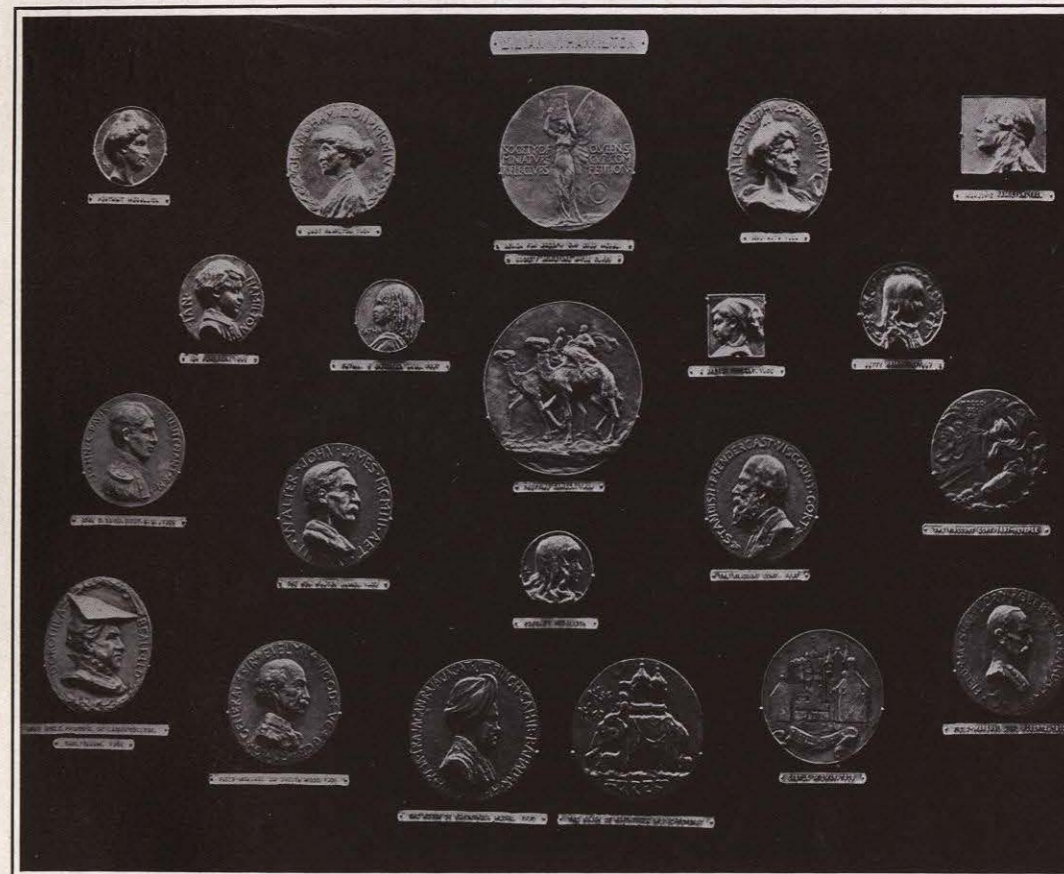


FIG. 1. 1. 2. 3. 4. 5. 6. 7. 8. 9. 10. 11. 12. 13. 14. 15. 16. 17. 18. 19.

- 11 Marjorie Hamilton, 1909. Cast plaquette, bronze, 89 x 76 mm.
 12 Miss Beale, Principal of Ladies' College, Cheltenham, 1904. Cast medal (oval), bronze, 108 x 127 mm.
 13 Mrs. Huth, 1904. Cast medal (oval), bronze, 108 x 127 mm.
 14 Portrait of a Child. Cast medal, bronze, 76 mm.
 15 Portrait of a Young Girl. Cast medal, bronze, 70 mm.
 16 Society of Miniature Rifle Clubs, Design for the Queen's Cup Gold Medal. Cast medallion, bronze, model, 140 mm.
 17 The Rajah of Kapurthala, 1890. Obverse and reverse. Cast medal, bronze, 127 mm.
 18 Trotting Camels, 1909. Cast medal, bronze, 159 mm.
 19 Viscount Gort, 1899. Obverse and reverse. Cast medal, bronze, 115 mm.

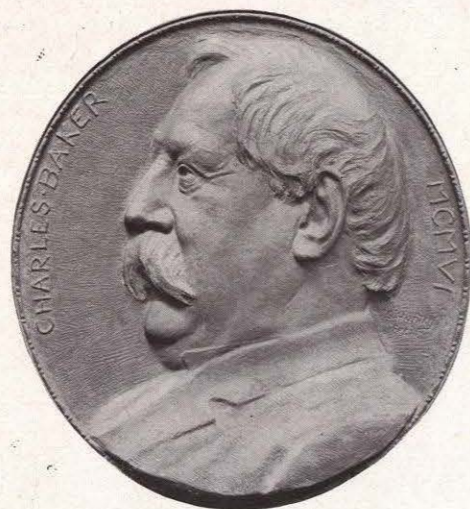
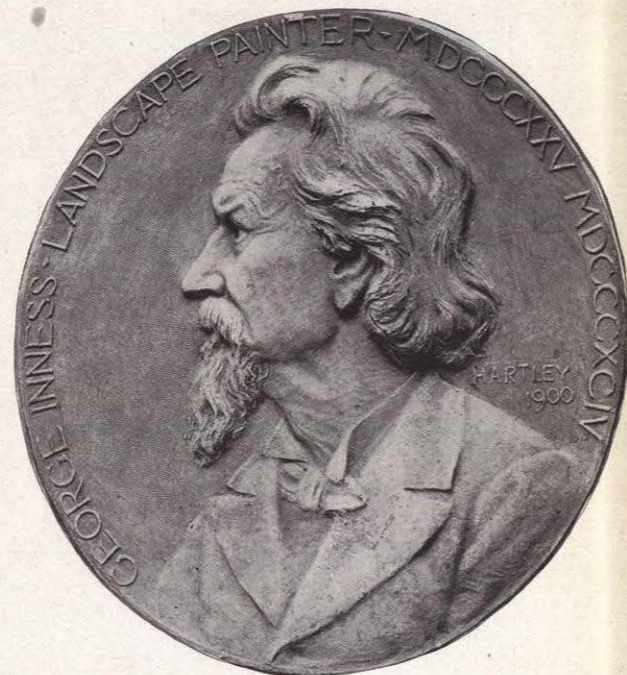
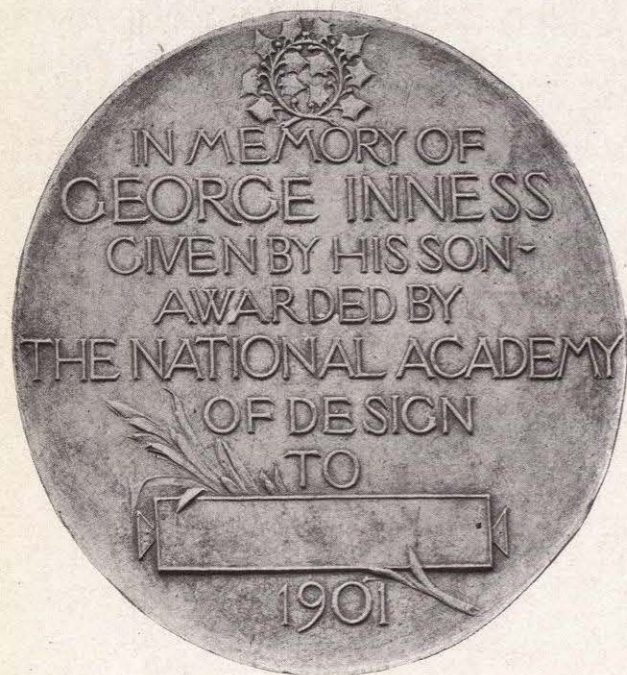


Nos. 1, 2, 3, 4, 5, 6, 7, 8, 9, 10, 11, 12, 13, 14, 15, 16, 17, 18, 19

J. SCOTT HARTLEY

J. SCOTT HARTLEY, sculptor, medalist (American), was born in Albany, New York. Member of the National Academy of Design, Society of American Artists, National Sculpture Society, and Architectural League. Founder of the Salmagundi Club. Address, 145 West Fifty-fifth Street, New York City.

- 1 Charles Baker, 1906. Bas-relief in bronze (in frame).
- 2 George Inness, awarded annually for the best landscape-painting at the exhibition of the National Academy of Design, 1901. Obverse and reverse. Medallion, in plaster, model, 30.4 cm. (struck medal, gold, 51 mm.).



ELI HARVEY

ELI HARVEY, sculptor (American), was born in Ogden, Ohio, in 1860. Studied at the Art Academy of Cincinnati, under Professors Noble and Rebisso; Paris, 1889-1900: at the Académie Julien, Professors Constant, Lefebvre, and Doucet; at the Académie Delescluze; and for animal sculpture at the Jardin des Plantes under Emmanuel Frémiet. Regular exhibitor at Paris Salons in painting and sculpture, 1896-1900. Received gold medal in painting at Paris-Province Exposition, 1900; also Wanamaker prize for sculpture at the American Artists' Association, Paris, 1900. Received medals for sculpture at Pan-American Exposition at Buffalo, 1901, and at Louisiana Purchase Exposition, St. Louis, 1904. Received commission to execute all the animal sculpture and decorations for the new lion-house, New York Zoölogical Park; large elk for the Order of Elks; pair of recumbent lions for the Eaton Mausoleum, Canada, and other works, including the human figure, both realistic and ideal. Commissioned to execute two large animals for the Palace of Agriculture, Louisiana Purchase Exposition, 1904. Represented in sculpture at the Metropolitan Museum of Art, New York, the City Art Museum of St. Louis, and private collections in the United States and Europe. Member of National Sculpture Society, New York Architectural League, New York Municipal Art Society, New York Public Education Association, the American Federation of Arts, Washington, D. C., and charter member of American Art Association, Paris; also Les Anciens de l'Académie Julien and the New York Zoölogical Society. Address, The Benedick, 80 Washington Square, East, New York City.

- 1 Lion, Fragment Study for a Pediment, No. 1, 1901. Bas-relief (oblong) in plaster, 17.8 x 30.4 cm.
- 2 Lioness, Fragment Study for a Pediment, No. 2, 1901. Bas-relief (oblong) in plaster, 17.8 x 30.4 cm.
- 3 Lioness Recumbent, 1896. Bas-relief (oblong) in bronze, 30.4 x 70.3 cm.