



14



### J. H. M. FURSE

J. H. M. FURSE, sculptor, medalist (British), was born in 1860. Educated at Radley and Trinity Colleges, Oxford. Was an assistant on the staff of the British Museum from 1881 to 1887, when he left it and soon after began work as sculptor. His father was the late Charles Wellington Furse, of Halsdon, Devon, and Archdeacon of Westminster. Address, Netherhampton House, Salisbury, England.

1 D. E. Hughes, Royal Society. Struck medal, modeled by J. H. M. Furse, engraved by J. H. Pinches, bronze, 57 mm.<sup>1</sup>

<sup>1</sup> Loaned by John H. Pinches, Esq.

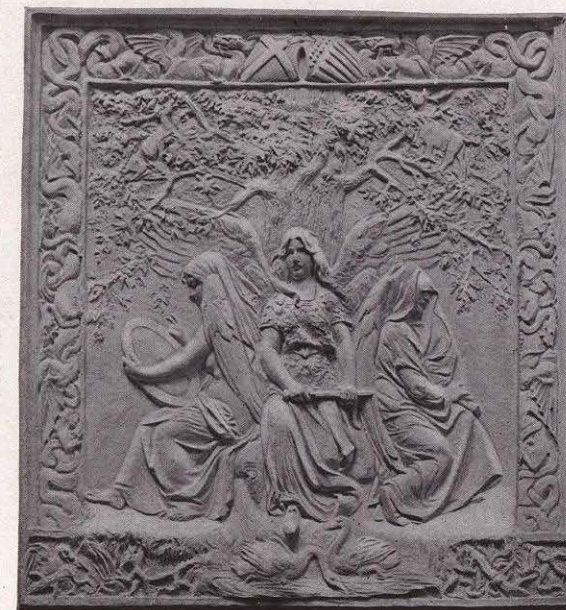
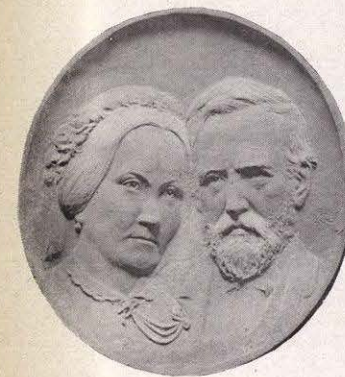
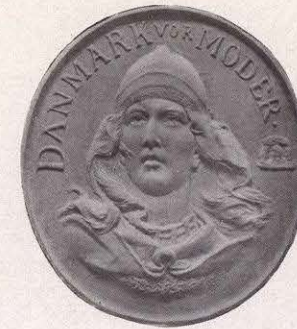
### JOHANNES SOPHUS GELERT

JOHANNES SOPHUS GELERT, sculptor, medalist (American), was born in Nybel, Schleswig, Denmark (now Prussia), 1852. Attended village school, 1859-65; spent one year at school in Copenhagen; studied art at Royal Academy of Copenhagen, 1870-75. Began artistic career as apprentice in wood-carving in 1866-70; after graduation at Royal Academy of Copenhagen made tour through Germany, then worked fifteen months in Paris, and exhibited at Salon of 1878 a colossal group representing the Norse god Thor combating a bull; worked on large monumental works, Berlin, 1879-82; executed several decorative statues for the theater in Copenhagen, 1882; studied at Rome on scholarship awarded by Danish government, then returned to Copenhagen; resident of United States since 1887 and citizen since 1892; worked at his art in Chicago, 1887-98; since then in New York City. Exhibited at World's Columbian Exposition, Chicago, 1893 (member international jury of award); Paris Exposition, 1900 (honorable mention); Nashville Centennial Exposition, 1897 (gold medal); Philadelphia Art Club, for group *The Little Architect* gold medal; American Art

Society, Philadelphia (gold medal); honorable mention, Buffalo Exposition. Member National Sculpture Society, Architectural League.

WORKS: statue, *Denmark*, United States Custom House, New York City; colossal group, *The Struggle for Work*, at World's Columbian Exposition; statue, *Napoleon the Great*, for Missouri State Building, Louisiana Purchase Exposition; statue, *Gothic Art*, Fine Arts Building, St. Louis; Haymarket statue (Haymarket Square), and Beethoven and Andersen statues (Lincoln Park), Chicago; Grant statue, Galena, Illinois; and his latest work, the four Roman statues erected for the Brooklyn Institute of Arts and Sciences. Address, 11 East Fourteenth Street, New York City.

- 1 Danish-Americans, 1909. Obverse and reverse. Medallion in plaster, model (struck medal, 31 mm.).
- 2 Irish-Americans. Obverse and reverse. Medallion in plaster, model, designed by F. C. Higgins.
- 3 Portrait medallion (the parents of the artist). Medallion in plaster, model, 30.4 cm.
- 4 The Fates. Plaque in plaster (used for the design of a magazine cover), 38.1 x 45.7 cm.
- 5 Triumphet America. Medallion in plaster, model, 30.4 cm.
- 6 Welsh-Americans, Evans Family medal. Medallion in plaster, model, designed by F. C. Higgins (struck medal, 38 mm.).



ALICE RUSSELL GLENNY  
(MRS. JOHN GLENNY)

ALICE RUSSELL GLENNY, sculptor, medalist (American), was born in Detroit, Michigan. Studied first in Dresden, Germany, and later, from 1889 to 1891, at the Julien School, Paris, under Boulanger and Lefèvre. During the years 1900 to 1902 she was again in Paris. Her work in sculpture was exhibited in the Paris Salon, 1902, and at the New York Society of Artists. Her paintings are exhibited at the National Academy of Design, New York; New York Society of Artists; the Architectural League; the Albright Gallery, Buffalo; the Buffalo Historical Society (Mural Decoration). She has received awards from the Buffalo Society of Artists, the Arts and Crafts Club of Buffalo, and an international medal for posters. Address, Wildwood, East River, Connecticut.

- 1 Gladys, 1901. Struck medal, silver, 101 mm.
- 2 Lyman Metcalfe Bass, 1905. Obverse and reverse. Struck medal, copies in silver and in bronze, 101 mm.

GENEVIÈVE GRANGER

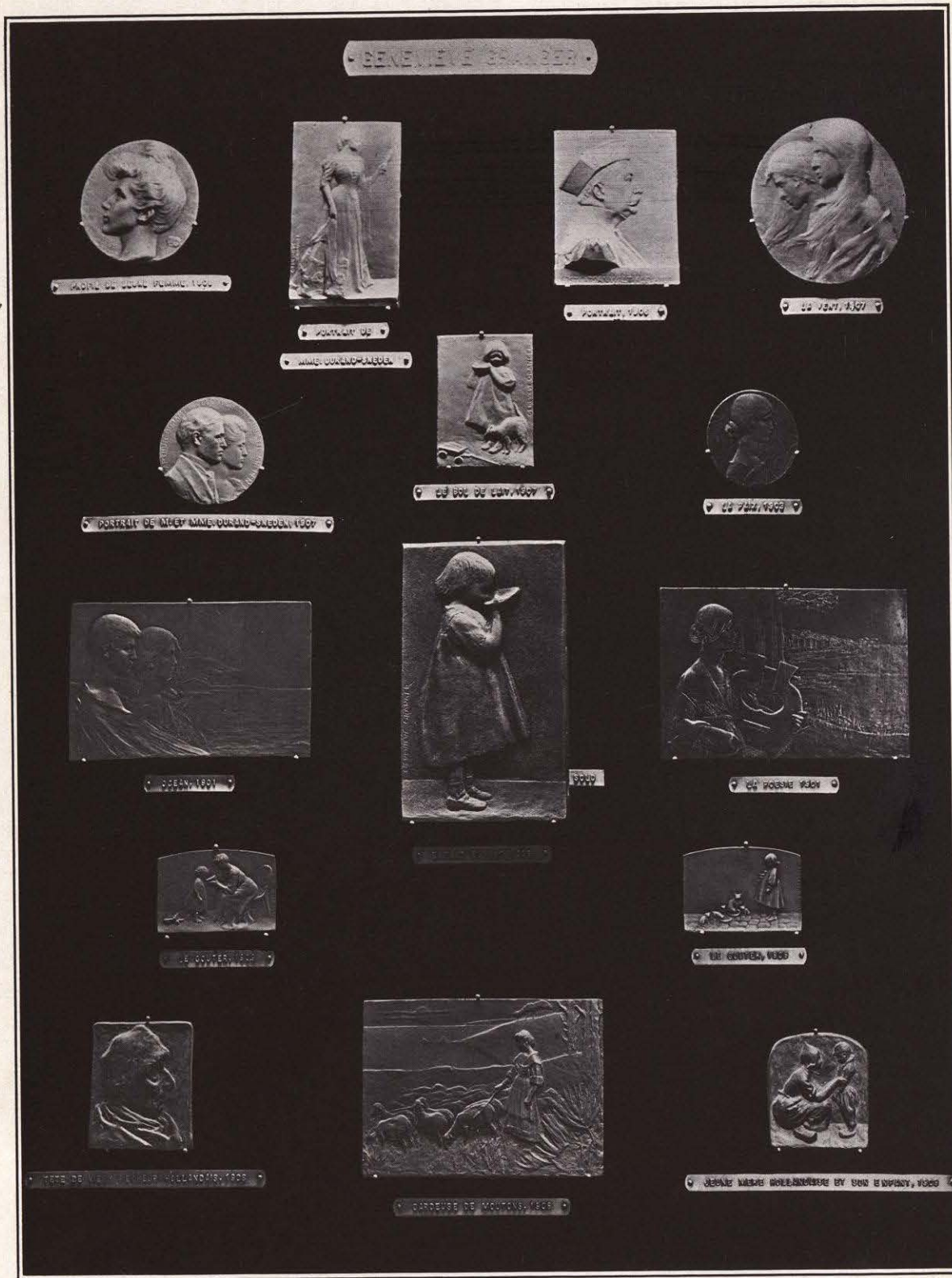
GENEVIÈVE GRANGER, medalist (French), was born in Tulle, France. Exhibited at the Salon of the Société des Artistes Français for twelve consecutive years. Gold medal of this Salon in 1901. Secretary of the Salon d'Automne, where she has exhibited since its foundation. Has exhibited at the Universal Exposition of 1900 and at the Expositions of Basel, Stuttgart, Strassburg, St. Louis, and Brussels, 1910. She is represented in the Luxembourg Museum, in the Musée des Médailles du Petit Palais, Musée du Palais de la Monnaie, Paris, and in most of the provincial museums.

WORKS: portrait of the tragedian *de Max*; *Senateur Peyrot* (Périgueux Museum); *Mme. Jeanne Marni*; *Mme. Roger-Miclos*; *S. M. l'Empereur de l'Allemande*, etc.; *La Poésie*, plaquette of the Mint of Paris; *Le Goûter*,

plaquette for the Société des Amis de la Médaille Française. Address, 22 rue Denfert-Rochereau, Paris.

- 1 Adolph Klein als Staatsanwalt Alexander, 1906. Plaquette, galvano gilt (cast, bronze, 100 x 80 mm.).
- 2 Enfant Buvant, 1908. Cast plaquette (single), bronze, 165 x 103 mm.
- 3 Gardeuse de Moutons, 1908. Plaque, galvano gilt (cast, bronze, 100 x 150 mm.).
- 4 Jeune Mère Hollandaise et son Enfant, 1909. Cast plaquette, bronze.
- 5 La Paix, 1903. Cast medal, bronze.
- 6 La Poésie, 1901. Cast plaque, bronze.
- 7 Le Bol de Lait, 1907. Plaquette, galvano gilt (cast, bronze, 80 x 60 mm.).
- 8 Le Goûter, 1909 (medal of the Société des Amis de la Médaille Française). Obverse and reverse. Struck plaquette, bronze, 51 x 71 mm. (clichés).
- 9 Le Vent, 1905. Cast medallion, bronze.
- 10 M. et Mme. Durant-Snedén, 1907. Medal, galvano gilt (cast, bronze, 70 mm.).
- 11 Mme. Durant-Snedén, 1907. Plaquette, galvano gilt (cast, bronze, 120 x 70 mm.).
- 12 Océan, 1901. Cast plaque, bronze.
- 13 Profil de Jeune Femme, 1908. Cast medal, bronze.
- 14 Tête de Vieux Pêcheur Hollandais, 1908. Cast plaquette, bronze.

RENÉ GRÉGOIRE



Nos. 1, 2, 3, 4, 5, 6, 7, 8, 9, 10, 11, 12, 13, 14

René Grégoire, sculptor (French), was born in Saumur, department of Maine-et-Loire, France. Studied at the École des Beaux-Arts at Paris, under the direction of Thomas and of H. Dubois. From 1893 until 1900 he exhibited in the Salon du Champ de Mars (Société Nationale). Since 1901 he has exhibited in the Salon of the Société des Artistes Français. He won the Grand Prix de Rome, then a third and second medal at the Exposition of Milan, the latter being obtained in 1908. At the Exposition of Milan he was awarded a gold medal. Among his best-known works may be mentioned the bust of the Exposition of Marseilles. At the Salon of 1910 he exhibited in *concours*, and was awarded the first medal. He also exhibited in *concours* at Copenhagen and Brussels. Address, 1 rue Leclerc, Paris (XIV).

1. Inauguration de l'Institut Océanographique de Monaco, 1909. Obverse and reverse. Plaquette, copies in galvano silvered and galvano bronzed, 110 x 56 mm. (cast plaque (single), bronze, 41 x 45 cm.; struck, 55 x 80 mm.).
2. Agriculture. Plaquette, galvano silvered, 120 x 55 mm. (cast plaque (single), bronze, 41.5 x 26 cm.).
3. Amitié. Plaquette, galvano bronzed, 110 x 30 mm. (cast plaque (single), bronze, 22.5 cm.).
4. Peinture. Plaquette, galvano gilt, 80 x 60 mm. (bas-relief in bronze, 1 x 0.80 m. and cast plaque (single), bronze, 21 x 15 cm.).
5. Poète. Plaquette, galvano silvered, 180 x 133 mm. (cast plaque (single), bronze, 37 x 27 cm.).
6. Preyer. Struck plaquette, galvano bronzed, 50 x 80 mm.
7. Same. Plaquette, galvano silvered, 110 x 180 mm. (cast plaque (single), bronze, 28 x 47 cm.).
8. Printemps. Plaquette, galvano silvered, 110 x 110 mm. (cast plaque (single), bronze, 30 x 26 cm.).
9. Temps Consolateur. Plaque, galvano silvered, 30 x 12 cm. (bas-relief in bronze, 96 x 50 cm.; cast plaque (single), bronze, 44 x 26 cm.; struck, 90 x 55 mm.).
10. Industrie. Plaquette, galvano silvered, 120 x 55 mm. (cast plaque (single), bronze, 41.5 x 26 cm.).



Nos. 1, 2, 3, 4, 5, 6, 7, 8, 9, 10, 11, 12, 13, 14

## RENÉ GRÉGOIRE

RENÉ GRÉGOIRE, medalist (French), was born in Saumur, department of Maine-et-Loire, France. Studied at the École des Beaux-Arts at Paris, where he was a pupil of Thomas and of H. Dubois. From 1893 until 1900 he exhibited at the Salon du Champ de Mars (Société Nationale). Since that time he has exhibited in the Salon of the Société des Artistes Français. In 1899 he won the Grand Prix de Rome, then a third and second medal at the Salon, this latter being obtained in 1908. At the Exposition of Milan he was awarded a gold medal. Among his best-known works may be mentioned the medal of the Exposition of Marseilles. At the Salon of 1910 he exhibited *hors concours*, and was awarded the first medal. He also exhibited *hors concours* at Copenhagen and Brussels. Address, 1 rue Leclerc, Paris (XIV).

- 1 Inauguration de l'Institut Océanographique de Monaco, 1909. Obverse and reverse. Plaquette, copies in galvano silvered and galvano bronzed, 110 x 156 mm. (cast plaque (single), bronze, 31 x 45 cm.; struck, 55 x 80 mm.).
- 2 L'Agriculture. Plaquette, galvano silvered, 120 x 55 mm. (cast plaque (single), bronze, 41.5 x 20 cm.).
- 3 L'Amitié. Plaquette, galvano bronzed, 110 x 30 mm. (cast plaque (single), bronze, 22.5 cm.).
- 4 La Peinture. Plaquette, galvano gilt, 80 x 60 mm. (bas-relief in bronze, 1 x 0.80 m. and cast plaque (single), bronze, 21 x 15 cm.).
- 5 La Pitié. Plaquette, galvano silvered, 180 x 135 mm. (cast plaque (single), bronze, 37 x 27 cm.).
- 6 Le Baiser. Struck plaquette, galvano bronzed, 50 x 80 mm.
- 7 *The same*. Plaquette, galvano silvered, 110 x 180 mm. (cast plaque (single), bronze, 28 x 47 cm.).
- 8 Le Printemps. Plaquette, galvano silvered, 110 x 110 mm. (cast plaque (single), bronze, 30 x 29 cm.).
- 9 Le Temps Consolateur. Plaque, galvano silvered, 20 x 12 cm. (bas-relief in bronze, 96 x 50 cm.; cast plaque (single), bronze, 44 x 26 cm.; struck, 90 x 55 mm.).
- 10 L'Industrie. Plaquette, galvano silvered, 120 x 55 mm. (cast plaque (single), bronze, 41.5 x 26 cm.).