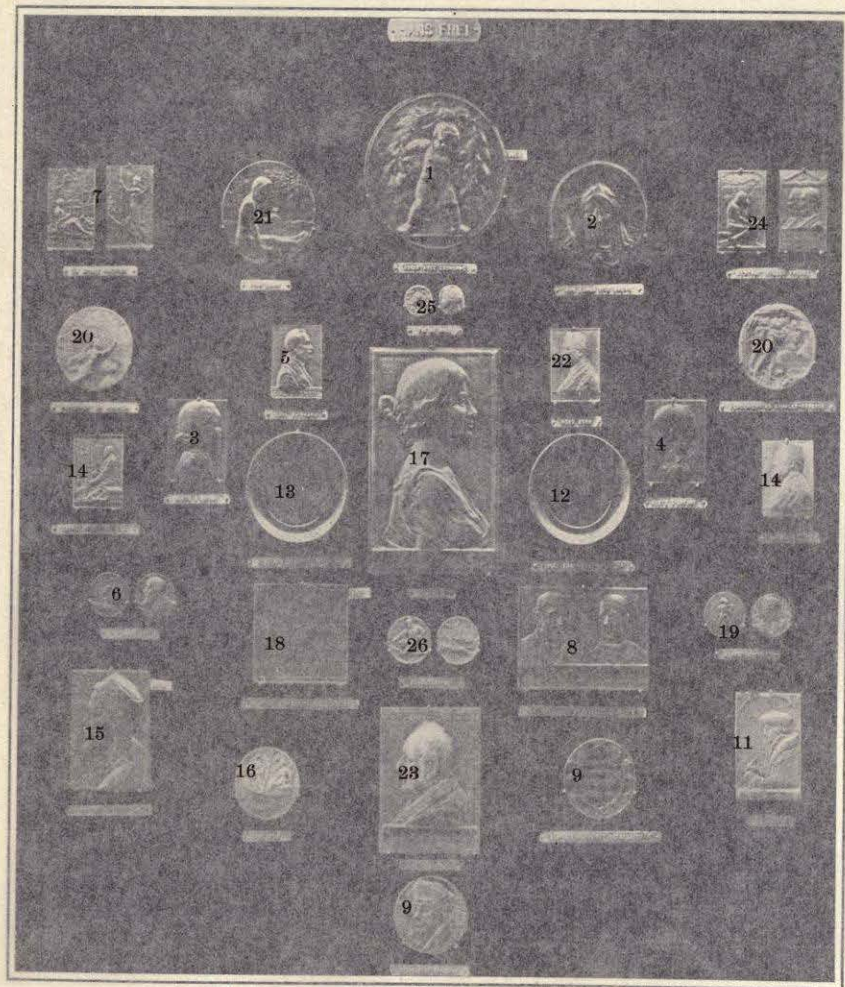
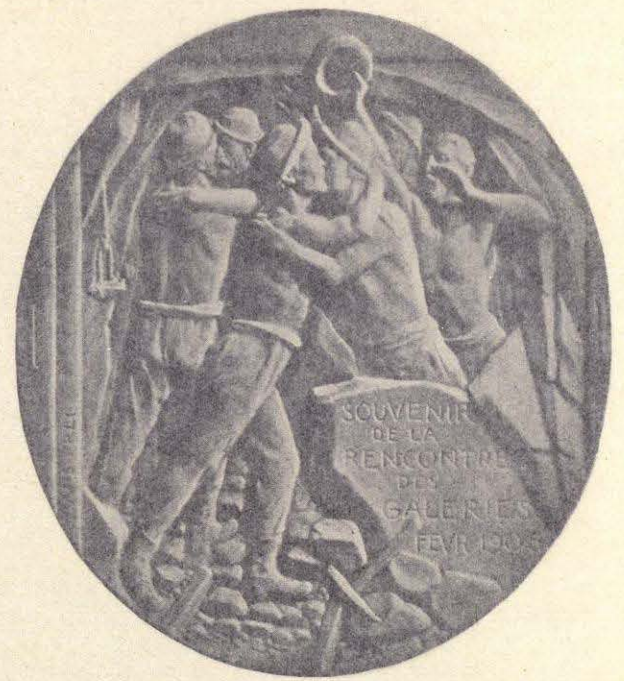
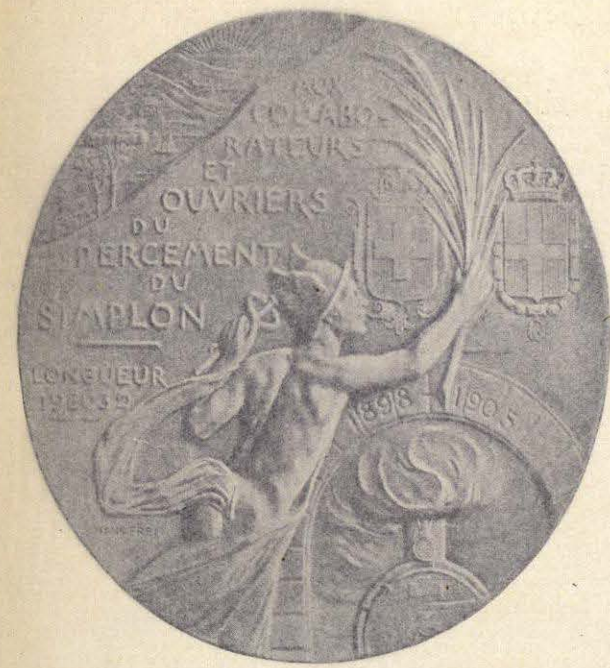
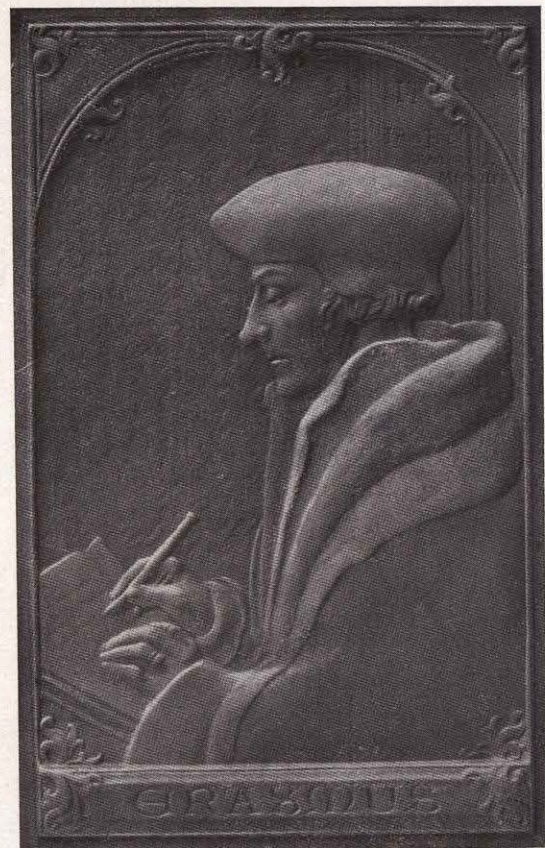
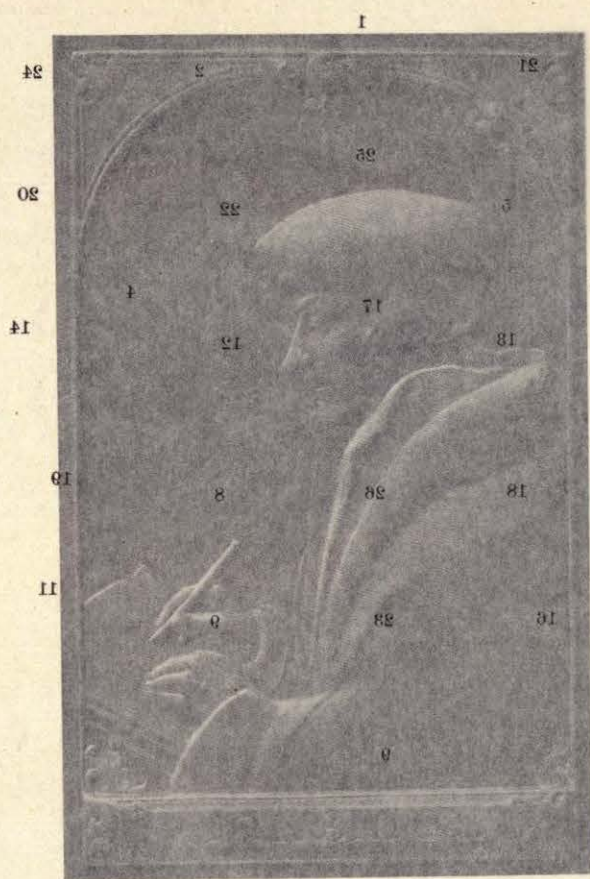


- 15 Hans Frei (portrait de l'artiste), 1906. Cast plaquette (single), bronze, 114 x 84 mm.
- 16 Inauguration du Canal de l'Elbe et de la Trave, 1900. Reverse. Struck medal, bronze, 68 mm.
- 17 Lauretta, 1896. Cast plaque (single), bronze silvered, 21 x 13 cm.
- 18 Le Numismate, 1908. Cast plaquette, bronze, 94 x 90 mm.
- 19 Mousquetaire, 1909. Struck medal, bronze, 44 mm.
- 20 Percement du Tunnel du Simplon, 1905. Obverse and reverse. Cast medal (double), bronze silvered, 80 mm.
- 21 Printemps, 1906. Cast medal (single), bronze, 102 mm.
- 22 René Bohn, Chimiste et Directeur de Fabrique, 1909. Struck plaquette, bronze gilt, 70 x 52 mm.
- 23 Samuel Baur, 1908. Cast plaquette, bronze silvered, 136 x 114 mm.
- 24 Sulzer Frères à Winterthur, 1906. Obverse and reverse. Struck plaquette, bronze, 77 x 51 mm.
- 25 Tir Cantonal des Deux Demi-Cantons de Bâle, 1906. Obverse and reverse. Struck medal, bronze gilt, 41 mm.
- 26 Tir Cantonal Schwyzois à Küsnacht, 1902. Obverse and reverse. Struck medal, bronze, 45 mm.



Nos. 1, 2, 3, 4, 5, 6, 7, 8, 9, 10, 11, 12, 13, 14, 15, 16, 17, 18, 19, 20, 21, 22, 23, 24, 25, 26

- 15 Hans Frei (portrait de l'artiste), 1906. Cast plaquette (single), bronze, 114 x 84 mm.
- 16 Inauguration du Canal de l'Elbe et de la Trave, 1900. Reverse. Struck medal, bronze, 68 mm.
- 17 Lauretta, 1896. Cast plaque (single), bronze silvered, 21 x 13 cm.
- 18 Le Numismate, 1908. Cast plaquette, bronze, 94 x 90 mm.
- 19 Mousquetaire, 1909. Struck medal, bronze, 44 mm.
- 20 Percement du Tunnel du Simplon, 1905. Obverse and reverse. Cast medal (double), bronze silvered, 80 mm.
- 21 Printemps, 1906. Cast medal (single), bronze, 102 mm.
- 22 René Bohn, Chimiste et Directeur de Fabrique, 1909. Struck plaquette, bronze gilt, 70 x 52 mm.
- 23 Samuel Baur, 1908. Cast plaquette, bronze silvered, 136 x 114 mm.
- 24 Sulzer Frères à Winterthur, 1906. Obverse and reverse. Struck plaquette, bronze, 77 x 51 mm.
- 25 Tir Cantonal des Deux Demi-Cantons de Bâle, 1906. Obverse and reverse. Struck medal, bronze gilt, 41 mm.
- 26 Tir Cantonal Schwyzois à Küssnacht, 1902. Obverse and reverse. Struck medal, bronze, 45 mm.



11



20



Nos. 1, 2, 3, 4, 5, 6, 7, 8, 9, 10, 11, 12, 13, 14, 15, 16, 17, 18, 19, 20, 21, 22, 23, 24, 25, 26

EMMANUEL FRÉMIET†

EMMANUEL FRÉMIET, sculptor, medalist (French), was born in Paris, 1824. He was a nephew and pupil of Rude, in whose studio he spent several years. He also did much work at the Clinique in Paris, making anatomical studies for the Orfila Museum. He early became interested in animal sculpture and devoted himself to the study of zoölogy. He exhibited for the first time in 1843 at the Salon, the work being a plaster cast representing a gazelle. Thenceforth he rapidly became known as a master in animal sculpture and design. Camels, bears, and elephants, as well as the domestic animals, furnished subjects for a score of works in bronze or in marble. He made many equestrian statues and groups, distributed over France, America, Africa, and Australia. His masterpiece in this field has been considered to be his equestrian statue *Jeanne d'Arc* in the Place des Pyramides, Paris. In 1850 he modeled his famous *Chien courant blessé*, now in the Luxembourg Gallery. In 1860 he received the decoration of the Legion of Honor, of which, in 1878, he became an officer and later a grand officer. At the Exposition of 1867 he received the second medal, and in that of 1887 the medal of honor. In 1875 he was appointed professor of animal design at the Museum of Natural History. He was a member of the Institute, of the Royal Academy of London, and of several other academies. He died in Paris, September 11, 1910.

WORKS: *The Horse at Montfaucon*, bought by the State in 1853; *Police-man on Horseback*; *Kitten*; *Gallic Chief*; *Napoleon I*; *Man of the Stone Age*; *The Knight Errant*; *The Snake-charmer*; *Gorillas*. Address, Mme. E. Frémiet, 43 boulevard Beauséjour, Paris.

- 1 *Jeanne d'Arc*. Medal, galvano silvered, 127 mm.¹
- 2 *St. Georges*. Medal, galvano silvered, 127 mm.

¹Nos. 1 and 2 were loaned by Edward D. Adams, Esq.

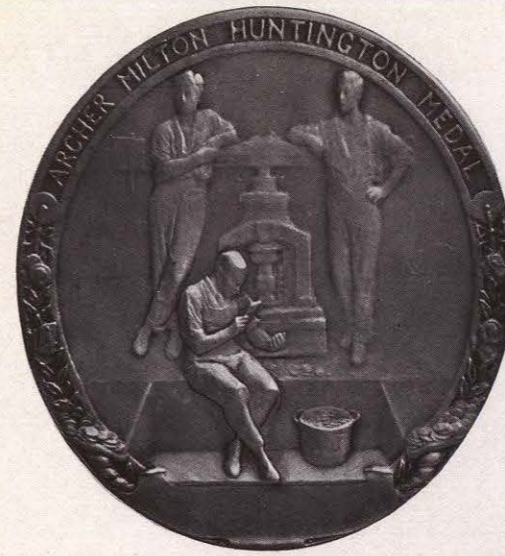
EMIL FUCHS

EMIL FUCHS, sculptor, medalist (Austrian), was born in Vienna, 1866. Studied first under Victor Tilguer, and then at the Royal Academy of Berlin. Obtained a traveling scholarship which took him to Rome in 1891, where he remained until 1899. During his stay in that city he executed one of his principal works, a marble group, *Mother's Love*. For this work he received a gold medal, Munich, 1896. Since 1897 he has had his permanent residence in London, but has spent the last five winters in New York.

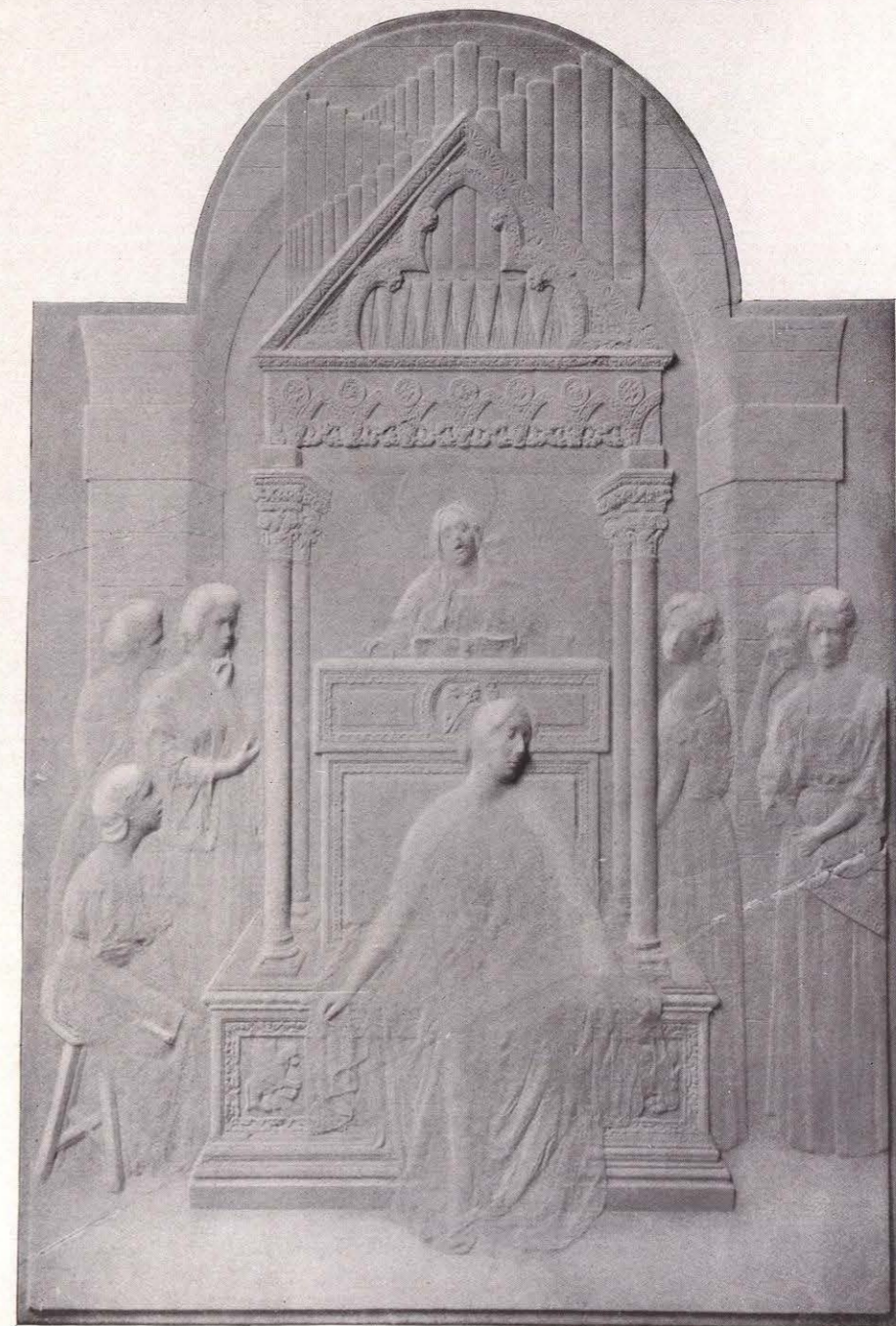
WORKS: memorials to the late Prince Christian Victor, St. George's Chapel, Windsor; memorials to King Edward VII, the Duke of Saxe-Coburg-Gotha, Empress Frederick; Queen Victoria at the church in Sandringham, Norfolk; busts, *Forbes Robertson* (a copy in bronze at the New Theatre, New York); *Arthur Pinero*; *Lady Alice Montagu*; *Ignace Paderewsky*; *Cecil Rhodes*. Address, 80 West Fortieth Street, New York City.

- 1 Anthony de Rothschild, 1899. Struck medal, silver, 21 mm.
- 2 Archer Milton Huntington, Fiftieth Anniversary of the American Numismatic Society (1858-1908), 1908. Obverse and reverse. Struck medal, silver, 67 mm.
- 3 *Chanson Sérieuse*, 1897. Bas-relief in marble.
- 4 Coronation of Edward VII and Alexandra, 1902. Obverse and reverse. Struck medal, silver, 63 mm.
- 5 Count Seilern, 1899. Struck medal, silver, 28 mm.
- 6 Edward, Prince of Wales, 1899. Struck medal, silver, 29 mm.
- 7 Edward VII, 1901. Design for a postage-stamp, sketch (in frame).
- 8 Evelyn de Rothschild, 1899. Struck medal, silver, 31 mm.
- 9 General Sir George White, 1899. Struck medal, silver, 32 mm.
- 10 George Hartmann, 1899. Struck medal, silver, 31 mm.
- 11 Hispanic Society of America, Award, 1907. Obverse and reverse. Struck medal, bronze, 102 mm.
- 12 *Same subject*, Membership, 1906. Obverse and reverse. Struck medal, bronze, 80 mm.

- 13 *The same.* Obverse and reverse. Cast medallion, iron, model for the above.
- 14 Hudson-Fulton Celebration, New York, 1909 (medal of the American Numismatic Society). Obverse and reverse. Struck medal, bronze, 102 mm. (also, smaller sizes).
- 15 Jack Churchill, 1898. Struck medal, silver, 29 mm.
- 16 Lord Charles Beresford, 1898. Obverse and reverse. Struck medal, silver, 32 mm.
- 17 Lord Roberts, 1901. Struck medal, silver, 34 mm.
- 18 Madame E., 1900. Struck medal, silver, 27 mm.
- 19 Madame K., 1898. Struck medal, silver, 33 mm.
- 20 Miss Cassel, 1898. Struck medal, silver, 25 mm.
- 21 Miss W., 1899. Struck medal, silver, 29 mm.
- 22 Motor Yacht Club, 1905. Obverse and reverse. Struck medal, silver, 55 mm.
- 23 Order for Art, Science, and Music, 1902. Obverse and reverse. Struck medal (badge), silver, 35 mm.
- 24 Prince and Princess of Wales, 1901. Struck medal, silver, 29 mm.
- 25 Princess Henry of Battenberg, 1899. Struck medal, silver, 28 mm.
- 26 *Same subject.* Cast plaquette (single), bronze, 110 x 93 mm.
- 27 Queen Alexandra, 1902. Obverse and reverse. Struck plaquette, silver, 70 x 70 mm.
- 28 Queen Victoria, 1900. Obverse and reverse. Struck medal, silver, 75 mm.
- 29 *Same subject,* 1900. Struck medal, silver, 29 mm.
- 30 Robert Hartmann, 1899. Struck medal, silver, 29 mm.
- 31 Sir Arthur Ellis. Struck medal, silver, 26 mm.
- 32 Sir Ernest Cassel, 1901. Struck medal, silver, 25 mm.
- 33 Termination of the South African War, 1901. Obverse and reverse. Struck medal, bronze, 70 mm.
- 34 Winston S. Churchill, 1898. Struck medal, silver, 29 mm.



2



3