

LA
CAIDA
DE UN
ANGEL

The image features a highly decorative gold letterhead on a dark blue, textured background. The text is arranged in four lines: 'LA', 'CAIDA', 'DE UN', and 'ANGEL'. The letters are in a bold, blackletter-style font with elaborate flourishes. A central vertical stem runs through the text, topped with a flame-like finial and bottomed with a floral base. A chain of circular links is draped across the middle of the text, passing behind the letters 'A', 'I', 'D', 'A', 'D', 'E', 'U', 'N', and 'A'. The entire design is framed by a dark blue border.

LA
AIDA
DE UN
ANGEL

PQ2325

.L3

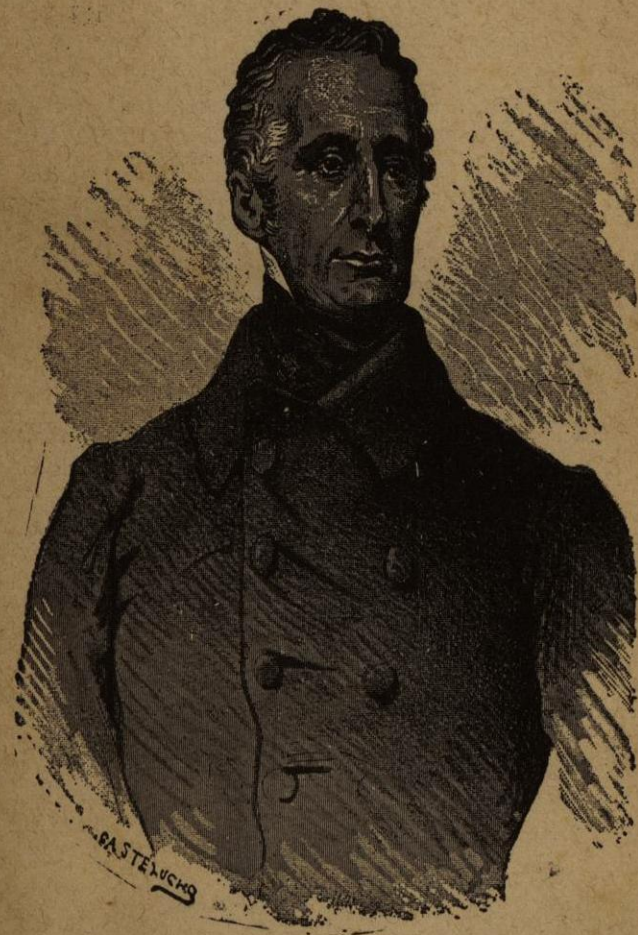
C318

1884



1020165518





A. DE LAMARTINE

BIBLIOTECA SALVATELLA

LA
CAIDA DE UN ANGEL

EPISODIO POR

A. DE LAMARTINE

TRADUCCION DE

MANUEL ARANDA Y SANJUAN

SEGUNDA EDICION

BARCELONA

ADMINISTRACION: NUEVA DE SAN FRANCISCO, 11 Y 13

1884